



**AMERICAN
LEGACY
LAND CO**

FOR SALE

**PLATTE RIVER
HUNTING PROPERTY**

Kearney, NE

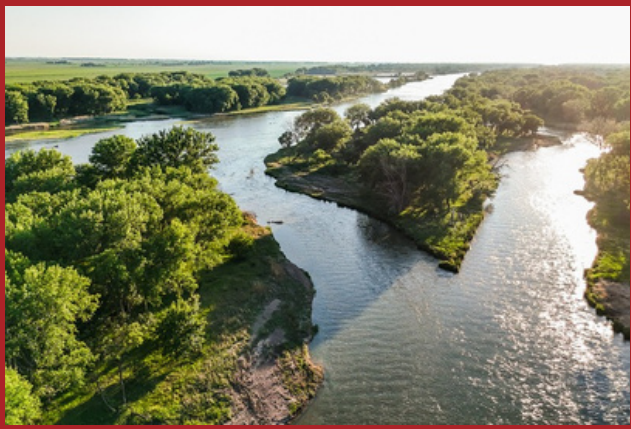
385 +/- Acres

OFFERED AT:

\$3,599,000

ABOUT THIS PROPERTY:

Located just minutes from Kearney, Nebraska, along the renowned Platte River corridor, this exceptional 385 +/- acre property represents a rare opportunity to own one of the premier hunting and recreational farms in the state. Featuring approximately 91 +/- acres of productive tillable alfalfa ground, the balance of the property consists of diverse river-bottom habitat including mature cottonwoods, thick cedar cover, and secluded timber pockets. The combination of income-producing acreage and outstanding wildlife habitat creates the ideal setup for both investors and outdoor enthusiasts.



More About this Property:

This farm is truly a sportsman's paradise, offering world-class whitetail deer hunting with the habitat and genetics to consistently attract and produce mature bucks. The Platte River setting provides exceptional waterfowl hunting opportunities that attract duck and goose hunters from across the nation. When nearby wetlands are dry or frozen, millions of migrating ducks and geese idle on the river in between feeding agriculture fields. Thriving populations of wild turkey and upland game birds make this a year-round recreational destination. Properties of this caliber, size, and location rarely come available, especially within minutes of Kearney. The farm can be accessed via Road 747, which runs along the south side of the property. Whether you're seeking a premier hunting retreat, a legacy property, or a combination of recreational enjoyment and agricultural income, this remarkable Platte River farm delivers on every level.

Contact Listing Agent: Nate Krick (402) 937-3763 for your private showing.

Directions: From the I-80 Kearney, NE Exit 272: Drive south for 1 mile on HWY 44. Then turn right, and drive west on W Rd (later turn into 747 Rd). Drive west for 7.5 miles and the property will be on the north side of 747 Rd.

Legal Description: 15 8 17 PT. S1/2SE1/4; L 1-2-3-4 15-8-17 COTTONWOOD & 15 8 7 ADJOINING L. 1-2-3-4 15-8-17 COTTONWOOD Phelps and Buffalo County, NE

Taxes: \$4,700 +/-

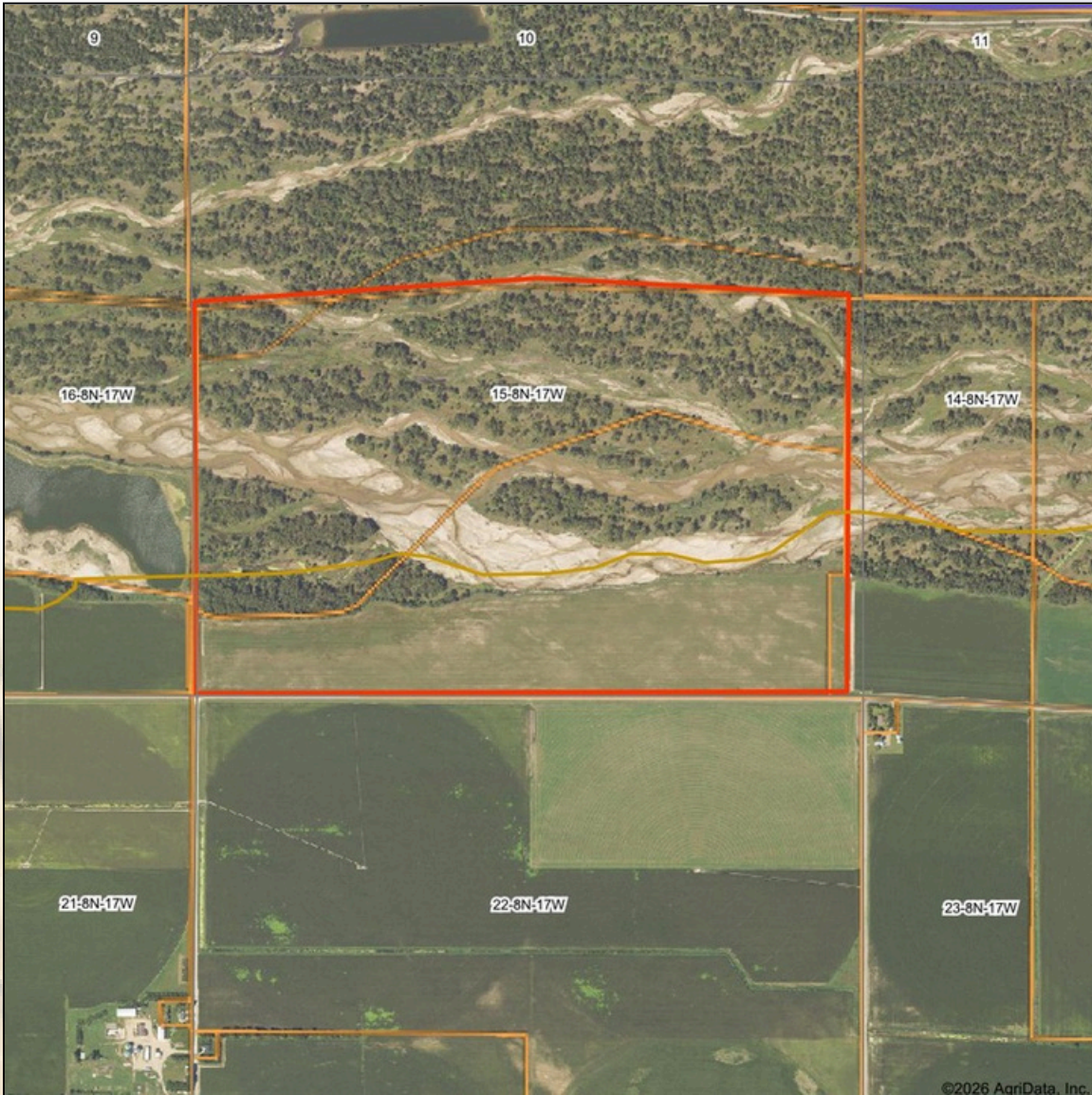
Income Potential: Share crop alfalfa 91 +/- acres

Leased for 2026

FEATURES:

- 385 +/- acres
- 10 minutes from Kearney, NE, I-80 Exit
- Located on the Platte River
- Great deer hunting corridor
- Mature cottonwoods, and dense grass cover
- Exceptional waterfowl hunting
- 91 +/- farmable acres

Aerial Map



©2026 AgriData, Inc.

Boundary Center: 40° 39' 41.73, -99° 13' 39.03

0ft 1245ft 2489ft



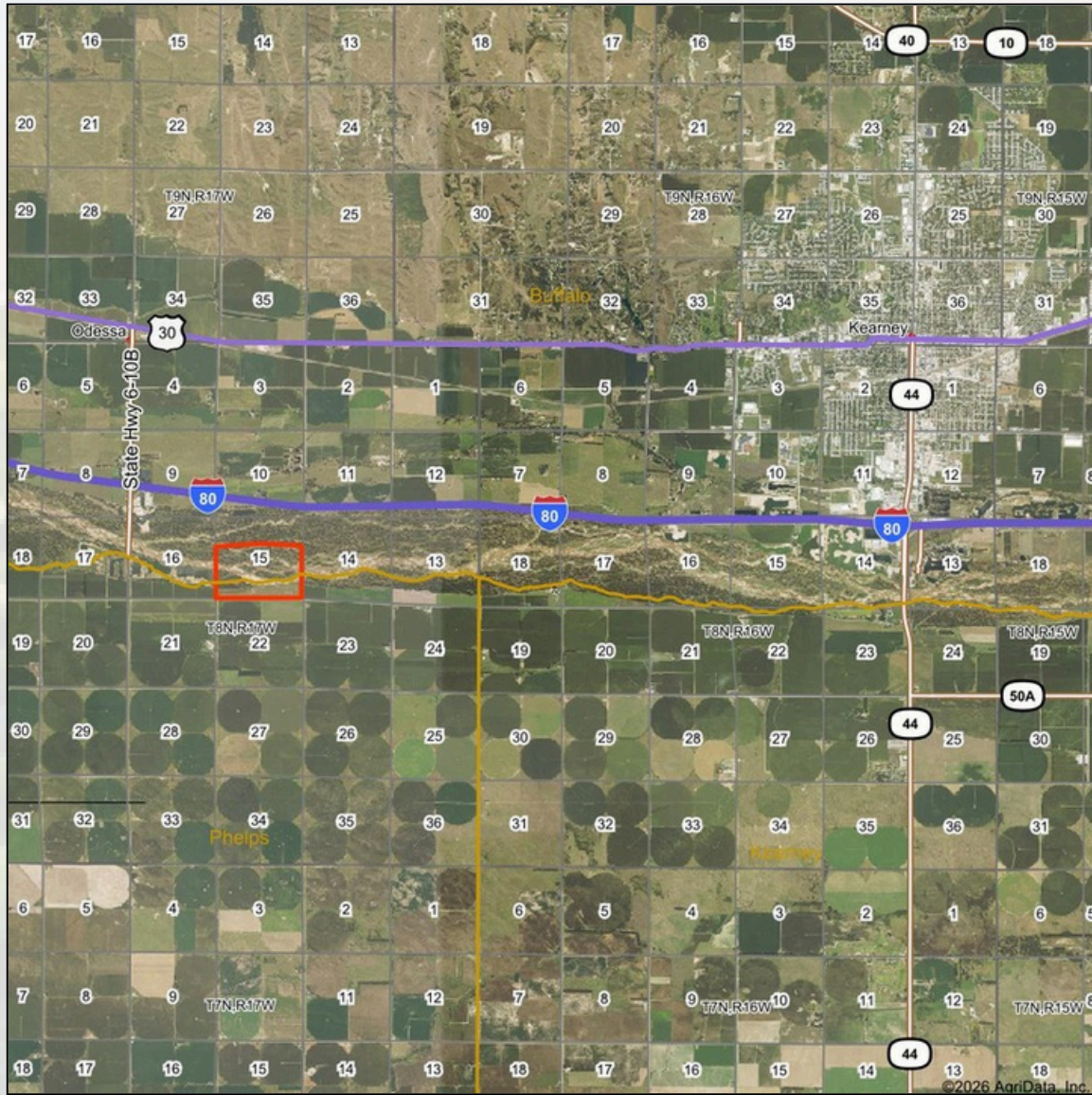
15-8N-17W
Buffalo County
Nebraska



5/30/2026



Aerial Map



Boundary Center: 40° 39' 41.73, -99° 13' 39.03

0ft 9451ft 18901ft



15-8N-17W
Buffalo County
Nebraska

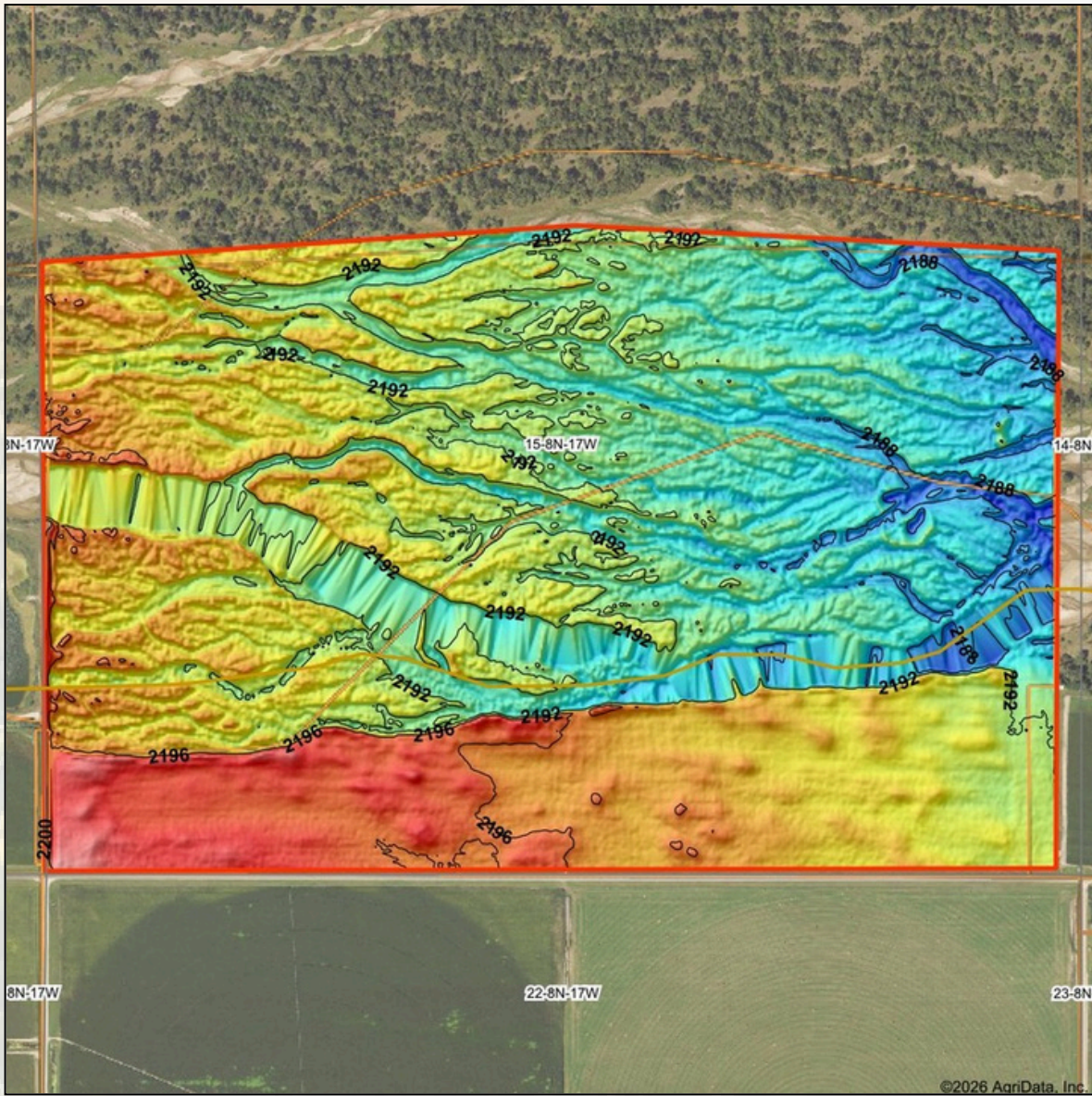


5/30/2026





Topography Hillshade



Low Elevation High



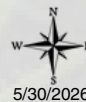
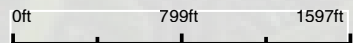
Maps Provided By:



© AgriData, Inc. 2025

www.AgriDataInc.com

Source: USGS 3 meter dem
 Interval(ft): 4
 Min: 2,186.1
 Max: 2,204.7
 Range: 18.6
 Average: 2,192.4
 Standard Deviation: 2.69 ft



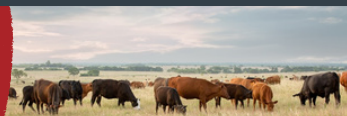
5/30/2026

15-8N-17W
Buffalo County
Nebraska

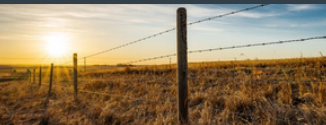
Boundary Center: 40° 39' 41.73, -99° 13' 39.03



FARM • RANCH • RECREATION
HUNTING • DEVELOPMENT



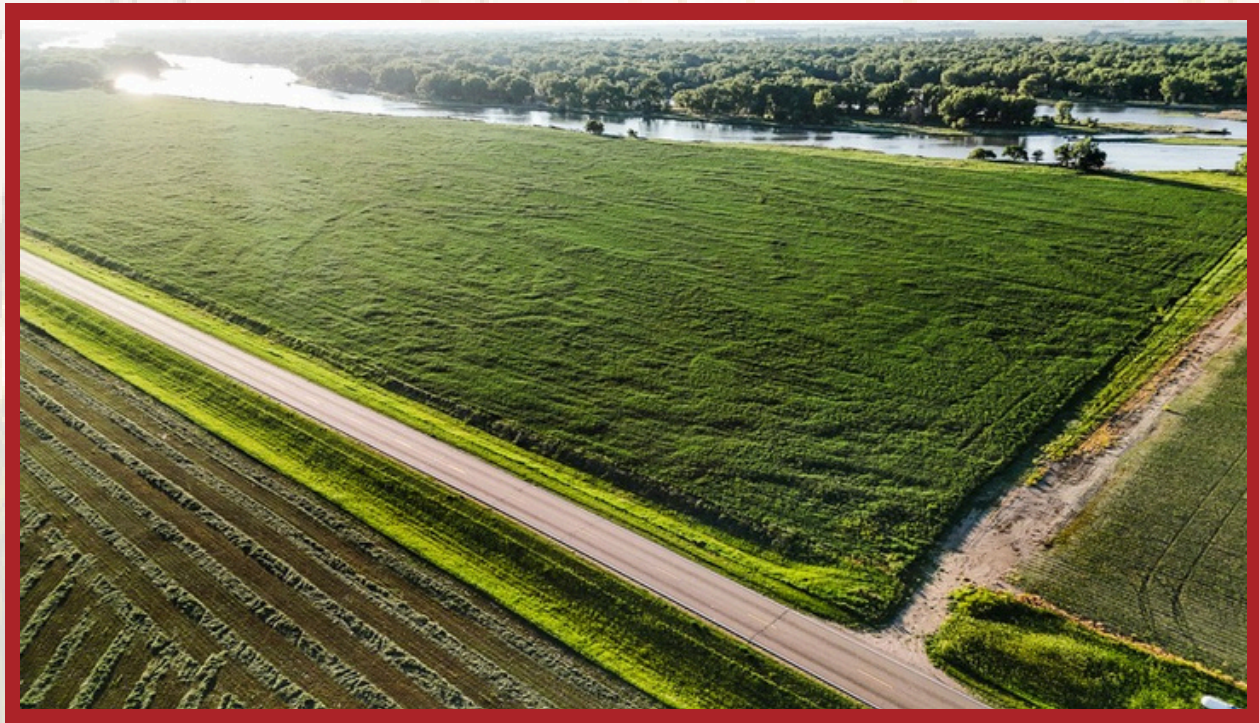
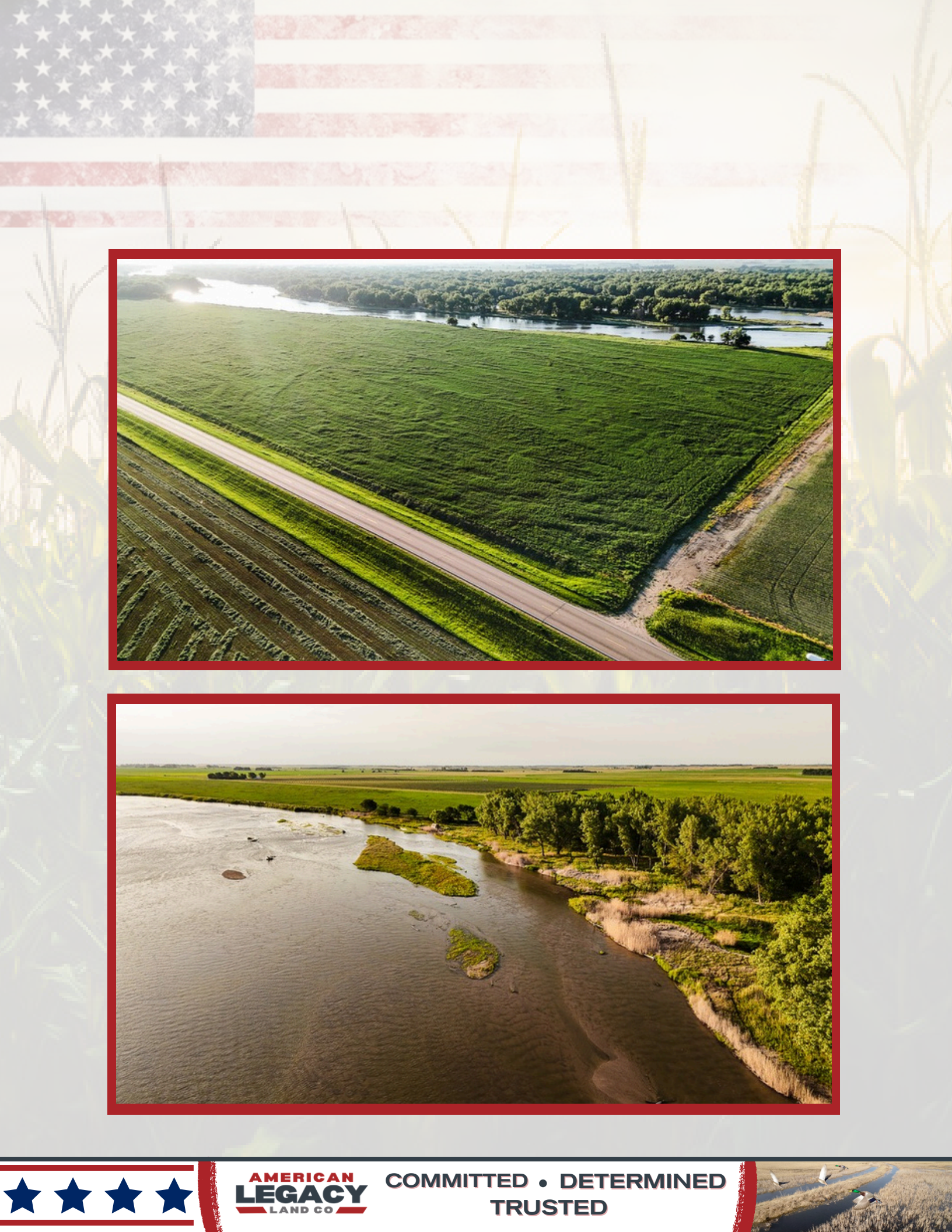
AMERICAN LEGACY LAND CO



AMERICAN
LEGACY
LAND CO

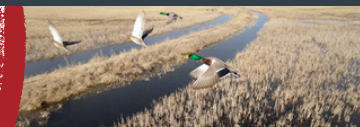
- LAND SALES
- LAND MANAGEMENT
- PROPERTY DEVELOPMENT





AMERICAN
LEGACY
LAND CO

COMMITTED • DETERMINED
TRUSTED



AMERICAN LEGACY LAND CO





**AMERICAN
LEGACY**
LAND CO

**HELPING YOU BUY
AND SELL LAND**



AMERICAN LEGACY LAND CO



AMERICAN
LEGACY
LAND CO

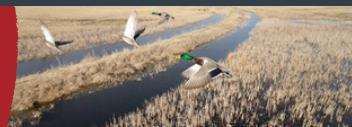
BUYING • SELLING
AUCTIONS





AMERICAN
LEGACY
LAND CO

FARM • RANCH • RECREATION
HUNTING • DEVELOPMENT



About the Agent:

Nate Krick found his passion for the outdoors at a young age, as he spent every bit of “free time” he had outside learning to bow hunt, fish, and appreciate many aspects of nature from the men in his life. From hunting trips with his brothers, dad, and grandpa as a child to now successfully co-owning his outdoor media production company, Identical Draw, Nate has experienced the ins and outs of what farming, recreational, and agricultural land has to offer. Nate has developed skills to properly manage his family hunting land through timber stand improvement, prescribed fire, and regular maintenance to enhance the land for wildlife to thrive. Nate learns from and works with professional outdoorsmen, and creates lasting relationships based on honesty, integrity, and kindness. With this background, Nate has carried over his vast knowledge and experiences into caring for the people he serves as a licensed agent in Nebraska and Kansas through American Legacy Land Co. .



Nate currently lives in Lincoln, Nebraska with his wife, Makayla, and two young children, ReyAnna and Callahan. Spending time outdoors as a family has been a priority for Nate from the start, and they regularly make the trip to the family land in Kansas to get some fresh air. When at home, you'll find Nate searing a deer steak on the cast iron, picking a James Taylor song for his kids on the guitar, or going for a run around the neighborhood. At the end of the day, Nate entrusts the Lord with all the things he loves and he is grateful to meet and work with some incredible people through land real estate.

NATE KRICK, LAND AGENT



402-937-3763



NathanKrick@AmericanLegacyLandCo.com