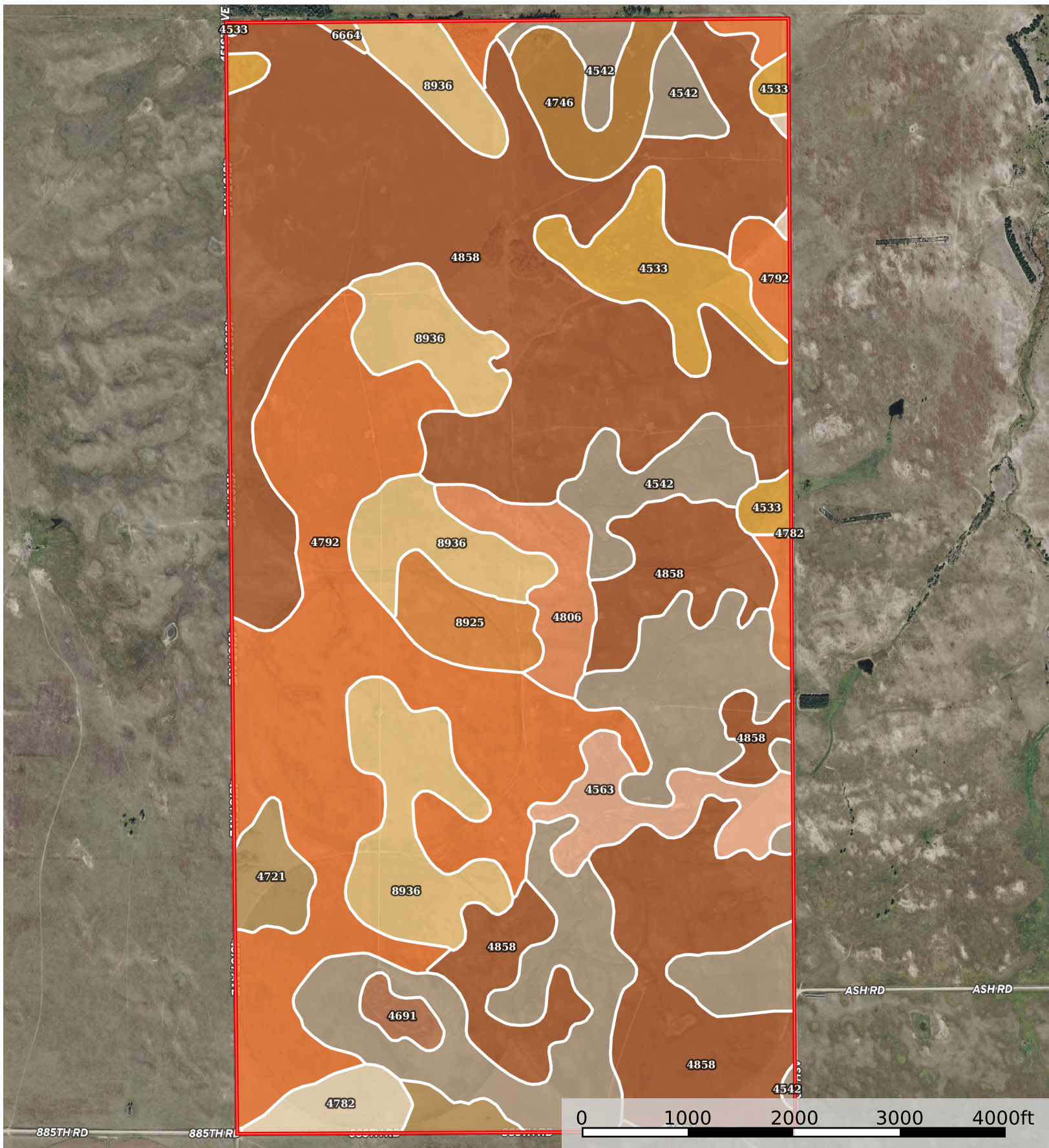


Rock County Irrigated Grazing Ranch – 1,283± Acres

Nebraska, 1280 AC +/-



Boundary

|  Boundary 1278.63 ac

SOIL CODE	SOIL DESCRIPTION	ACRES	%	CPI	NCCPI	CAP
4858	Valentine-Els complex, moist, 0 to 9 percent slopes	494.3 6	38.66	0	29	6e
4792	Valentine fine sand, 3 to 9 percent slopes, moist	253.0 1	19.79	0	31	6e
4542	Els-lpage complex, 0 to 3 percent slopes	194.2 2	15.19	0	26	6w
8936	Simeon-Meadin complex, 0 to 9 percent slopes	125.9 9	9.85	0	30	6s
4533	Els loamy sand, 0 to 3 percent slopes	50.12	3.92	0	30	4w
4563	Els-Tryon complex, 0 to 3 percent slopes	31.08	2.43	21	27	4w
4746	Tryon loamy fine sand, 0 to 3 percent slopes	28.96	2.26	0	23	5w
4806	Valentine fine sand, rolling, 9 to 24 percent slopes, moist	27.36	2.14	0	25	6e
4721	Pivot loamy sand, 0 to 3 percent slopes	24.47	1.91	0	33	4e
8925	Simeon loamy sand, 0 to 3 percent slopes	22.88	1.79	0	25	6s
4782	Valentine fine sand, 0 to 3 percent slopes, moist	17.41	1.36	0	31	6e
4691	Marlake mucky peat	7.35	0.57	6	2	8w
6664	Brunswick-Longpine loamy sands, 3 to 11 percent slopes	1.42	0.11	0	28	4e
TOTALS		1278. 63(*)	100%	0.54	28.68	5.82

(*) Total acres may differ in the second decimal compared to the sum of each acreage soil. This is due to a round error because we only show the acres of each soil with two decimal.

Capability Legend

Increased Limitations and Hazards

Decreased Adaptability and Freedom of Choice Users

Land, Capability

								
	1	2	3	4	5	6	7	8
'Wild Life'	•	•	•	•	•	•	•	•
Forestry	•	•	•	•	•	•	•	
Limited	•	•	•	•	•	•	•	
Moderate	•	•	•	•	•	•		
Intense	•	•	•	•	•			
Limited	•	•	•	•				
Moderate	•	•	•					
Intense	•	•						
Very Intense	•							

Grazing Cultivation

(c) climatic limitations (e) susceptibility to erosion

(s) soil limitations within the rooting zone (w) excess of water