

AMERICAN LEGACY LAND CO

FOR SALE

RIVERFRONT PROPERTY W/ HOME

Goodridge, MN

7.5 +/- Acres

OFFERED AT:

\$360,000

ABOUT THIS PROPERTY:

Nestled along a scenic bend of the Red Lake River just 12 miles southeast of Thief River Falls, this unique 7.5 +/- acre property offers an exceptional blend of privacy, recreation, and functionality. Located across the road from the Kratka Boat Landing, it's an ideal setting for fishing, boating, snowmobiling, and ATV adventures. The beautifully maintained grounds feature mature oaks, flowering crabapple and plum trees, lilacs, evergreens, expansive lawns, a private riverfront dock, and a firepit area overlooking the water.



More About this Property:

This recently refinished split-level home offers approximately 2,800 sq ft with 4 bedrooms and 2.5 bathrooms. The main level features an open-concept living and dining area, a spacious, newly renovated kitchen, and abundant storage. Three bedrooms and 1.5 baths are located on the upper level. The lower level includes a large family room with fireplace, office, laundry and mudroom, full bath, and a separate 400 sq ft efficiency apartment—ideal for guests, rental income, or multi-generational living. Recent updates include seamless gutters, off-peak heating, central A/C, propane furnace, newer shingles, well, and garage roof.

Additional features include a 28' x 40' detached garage, 73' x 10' barn, and multiple storage sheds—perfect for a shop, hobby farm, or extra storage. Enjoy peaceful country living with direct river access—this move-in-ready property offers the best of rural living and outdoor recreation.

Directions: From Thief River Falls, head east on Center Street East (MN-1) for approximately 10–12 miles, then turn south onto 250th Avenue NE. Continue to 12916 250th Ave NE; the property will be located on the left near the Red Lake River, just across from the Kratka Boat Landing.

Address: 12916 250th Ave N Goodridge, MN 56725

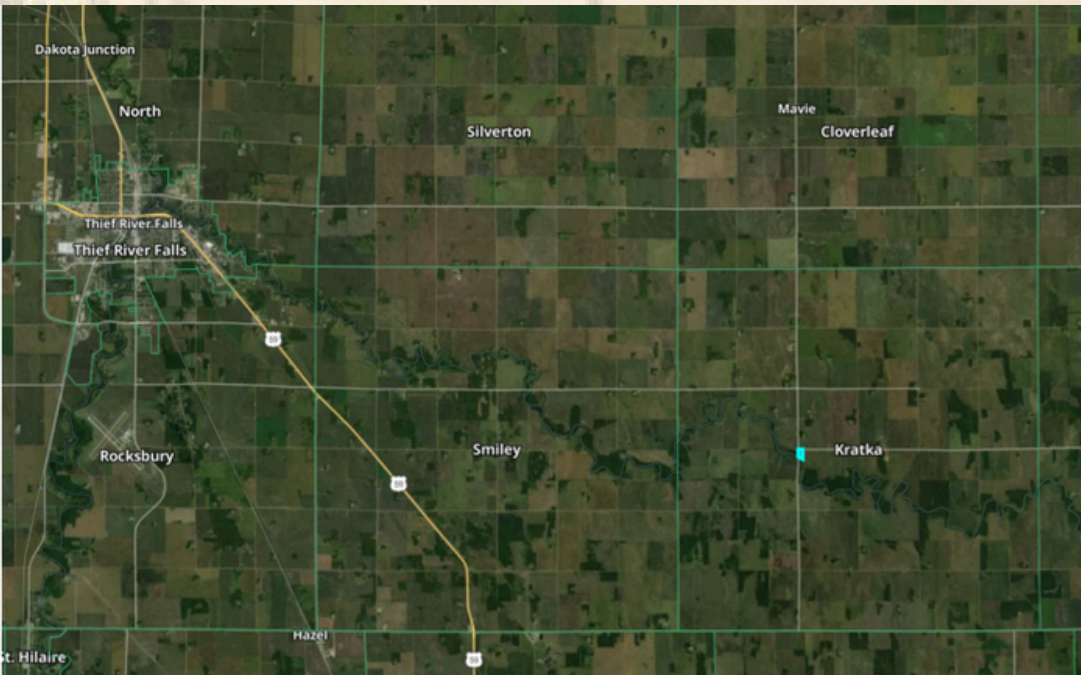
Legal Description: SECT-21 TWP-153 RANGE-041 7.50 AC W 375' OF GOVT LOT 12, legal to govern Pennington County, MN

Taxes: \$2,588.00

FEATURES:

- 7.5 +/- acres
- 2,800 sq ft updated home
- 4 bedrooms, 2.5 bathrooms
- 400 sq ft efficiency apartment
- 28 x 40 detached garage, 73 x 10 barn, and multiple storage sheds
- Private dock, firepit area, and mature trees
- Prime location near Thief River Falls

**Pennington Co.,
MINNESOTA**



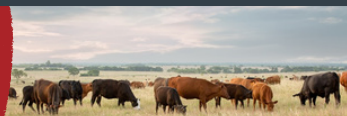
AMERICAN LEGACY LAND CO



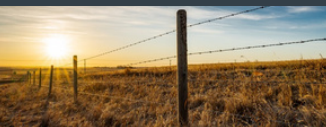


**AMERICAN
LEGACY**
LAND CO

FARM • RANCH • RECREATION
HUNTING • DEVELOPMENT



AMERICAN LEGACY LAND CO



AMERICAN
LEGACY
LAND CO

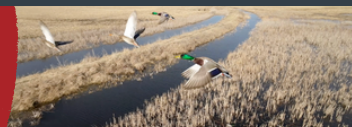
- LAND SALES
- LAND MANAGEMENT
- PROPERTY DEVELOPMENT



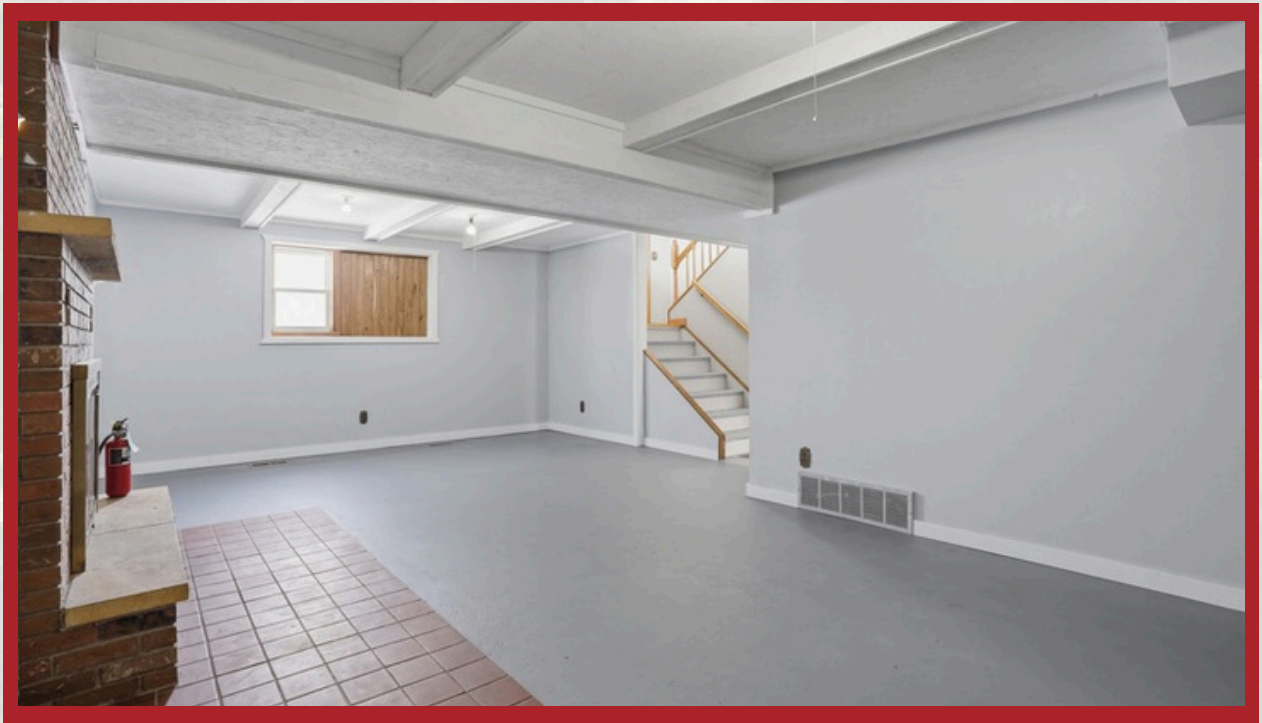


AMERICAN
LEGACY
LAND CO

COMMITTED • DETERMINED
TRUSTED

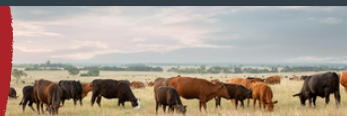


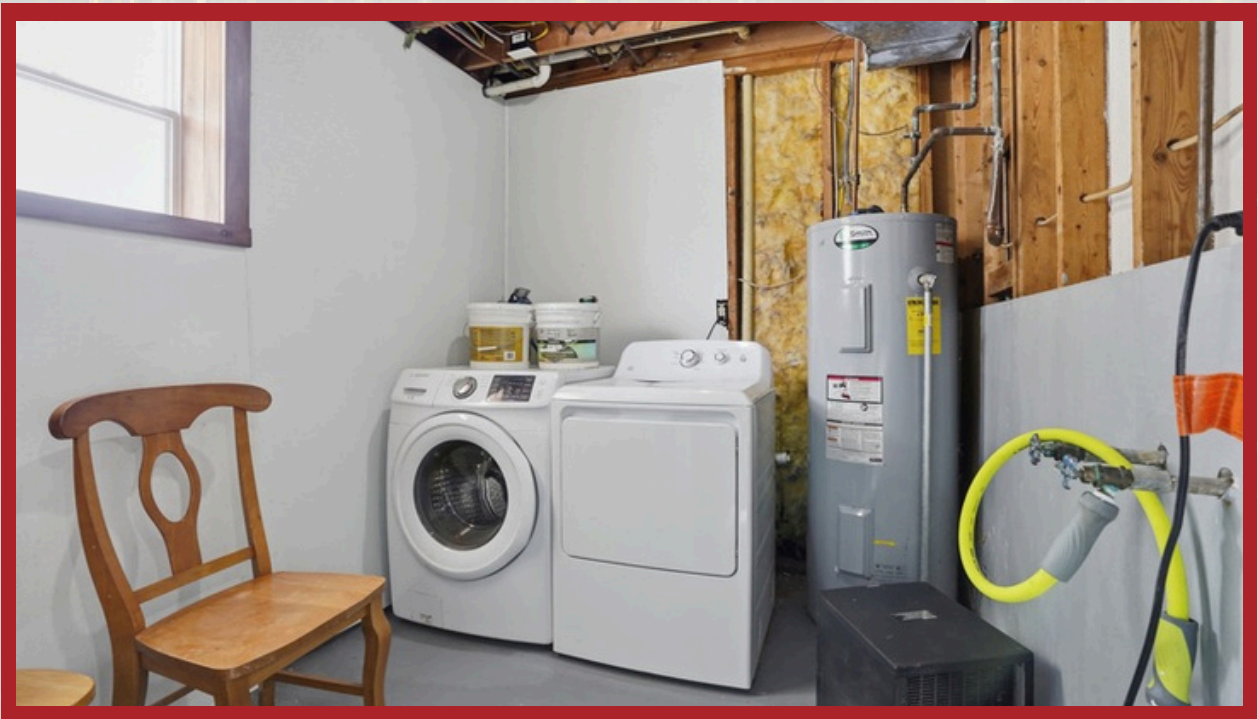




**AMERICAN
LEGACY**
LAND CO

**HELPING YOU BUY
AND SELL LAND**

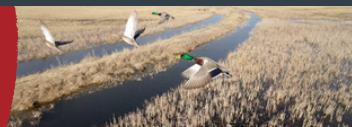






AMERICAN
LEGACY
LAND CO

FARM • RANCH • RECREATION
HUNTING • DEVELOPMENT



About the Agent:

Jordan is originally from Western Wisconsin where he grew up hunting and learning a love for the land and outdoors. From an early age, Jordan has had a passion for wildlife and creating better habitat. What started out as a hobby, has now turned into his dream career.

Jordan enjoys sharing his knowledge and experience with other outdoorsmen. Having spent many years working within the hunting industry - his knowledge and passion for land and land management only grew. He continues to travel the Midwest hunting and learning about regions and their land practices. His expertise is proven through his sweat equity for himself and his clients, with their success in the woods. Having the ability to break down a property to set it up for success is Jordan's strong suit, as well as finding the ideal property for the outdoorsmen.

An active member in the National Deer Association, Backcountry Hunters and Anglers, National Wild Turkey Federation, and Ducks Unlimited, Jordan enjoys giving back to wildlife and conservation while getting youth involved in the outdoors.



Whether you are looking for hunting land, developable land, farm, a cabin, or country living, in MN, Jordan is your expert on the buy/sell side as well as land consulting. You'll find him in the woods or on the lake year round.

Jordan currently lives in the Brainerd Lakes Area of MN with his wife, Greta, and two kids Dawson and Presley, and their black lab, Tilly.

JORDAN YIRA , BROKER/LAND AGENT



320-333-8867



Jordan@AmericanLegacyLandCo.com