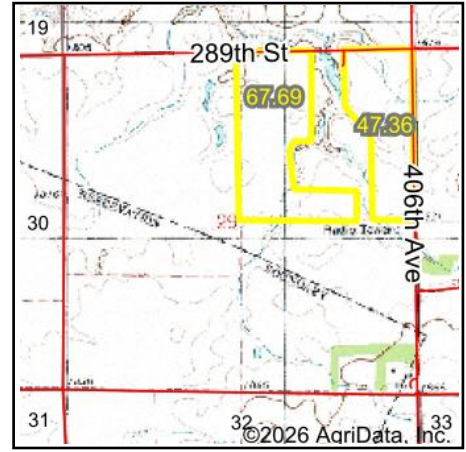
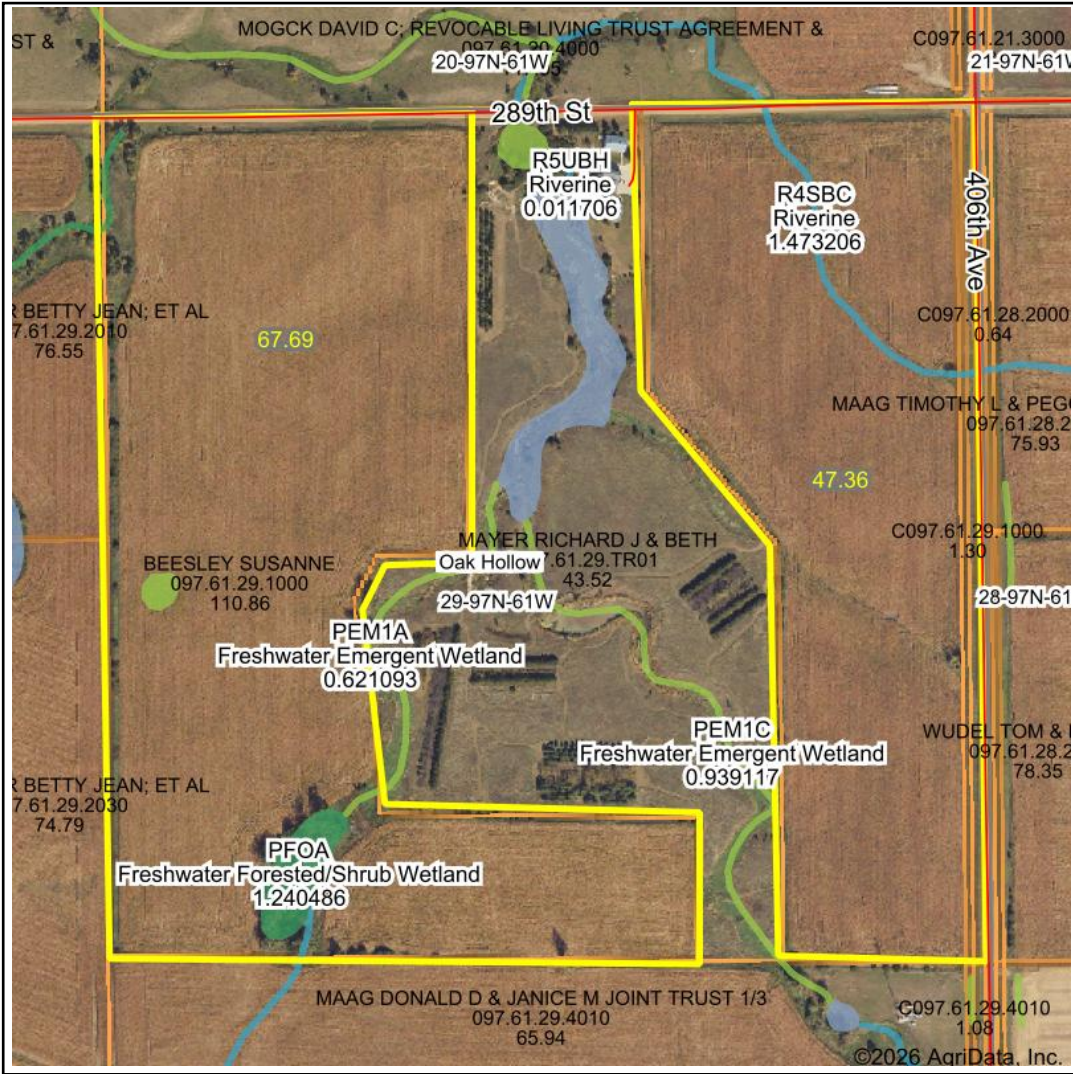


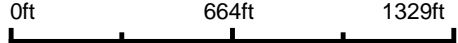
# Wetlands Map



**State:** South Dakota  
**Location:** 29-97N-61W  
**County:** Hutchinson  
**Township:** Oak Hollow  
**Date:** 2/18/2026



Maps Provided By:



Classification Code	Type	Acres
PFOA	Freshwater Forested/Shrub Wetland	1.39
R4SBC	Riverine	0.60
PEM1Ad	Freshwater Emergent Wetland	0.23
PEM1A	Freshwater Emergent Wetland	0.07
PEM1C	Freshwater Emergent Wetland	0.00
Total Acres		2.29

Data Source: National Wetlands Inventory website. U.S. DoI, Fish and Wildlife Service, Washington, D.C. <http://www.fws.gov/wetlands/>