



**AMERICAN  
LEGACY**  
LAND CO

**FOR SALE**

**FARM GROUND**

Hutchinson County, SD

**115 +/- Acres**

---

**OFFERED AT:  
\$920,000**

***ABOUT THIS PROPERTY:***

Located in Hutchinson County, this 115 +/- acre highly productive farmland tract offers an outstanding opportunity for farmers and investors alike. With an impressive soil productivity index of 83.2, this property represents some of the stronger producing ground in the area and is well suited for consistent row-crop production.

The farm is split, creating excellent operational flexibility. Approximately 45± acres lie on the east side along 406th Ave, with the remaining 65± acres situated on the west side of the quarter. This layout makes for an efficient row-crop rotation setup.



### **More About this Property:**

This farm would make a great addition for an established grower looking to expand, or a great starter piece for the next generation building their operation.

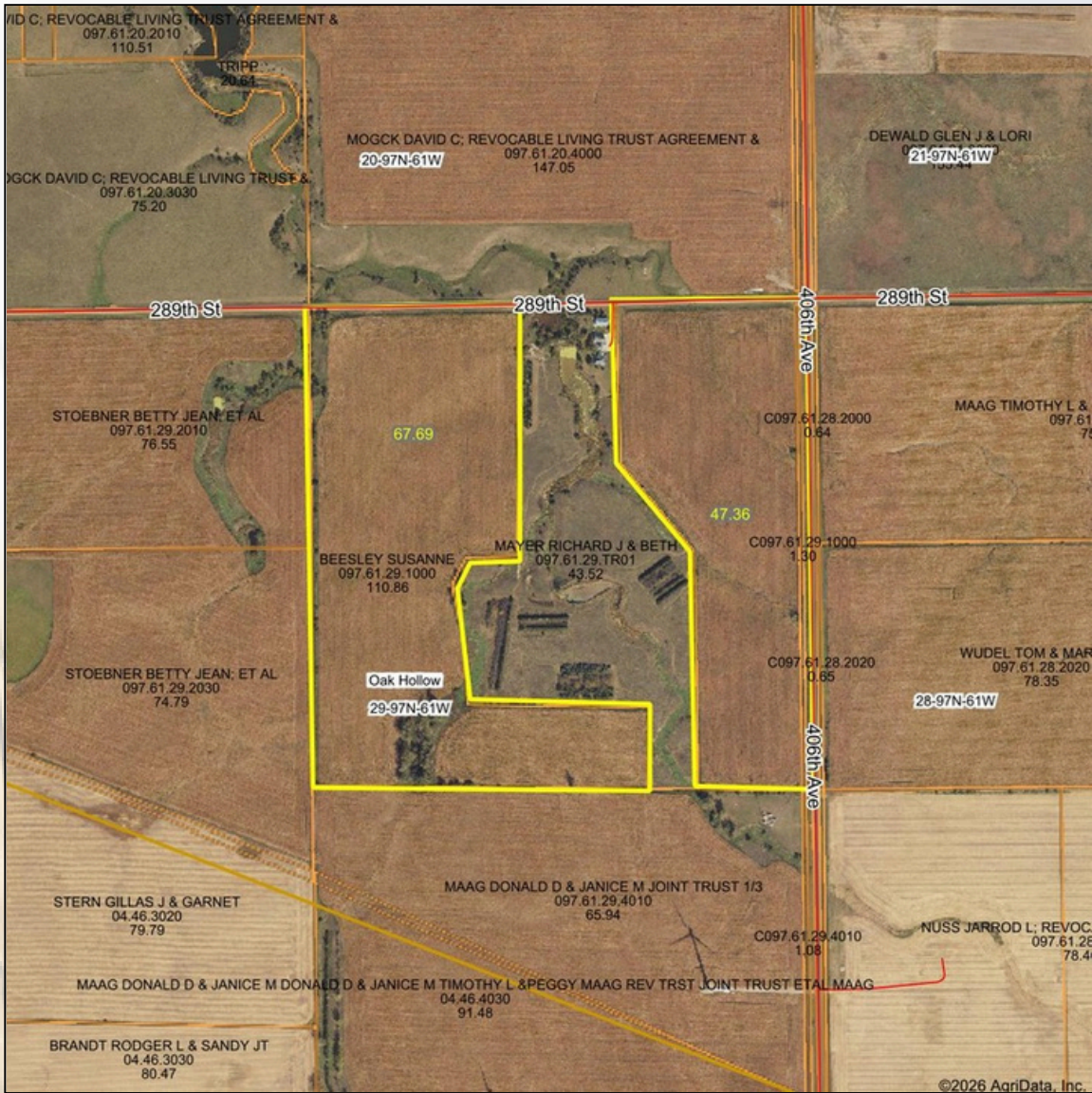
With strong soils, good access, and a practical split layout, this property provides an excellent opportunity to secure quality farmland in Hutchinson County.

Legal Description: NE 1/4 less Mueller tracts 1&2 in Section 29, Township 97N, Range 61W Hutchinson County, SD

## **FEATURES:**

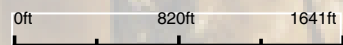
- 115 +/- total acres
- 115 +/- tillable acres
- Great access
- Great soils
- Good topography of the land
- Strong yield potential
- Building eligibility

## Aerial Map

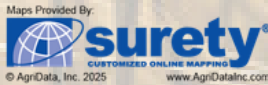


©2026 AgriData, Inc.

Boundary Center: 43° 11' 35.69, -98° 4' 29.76



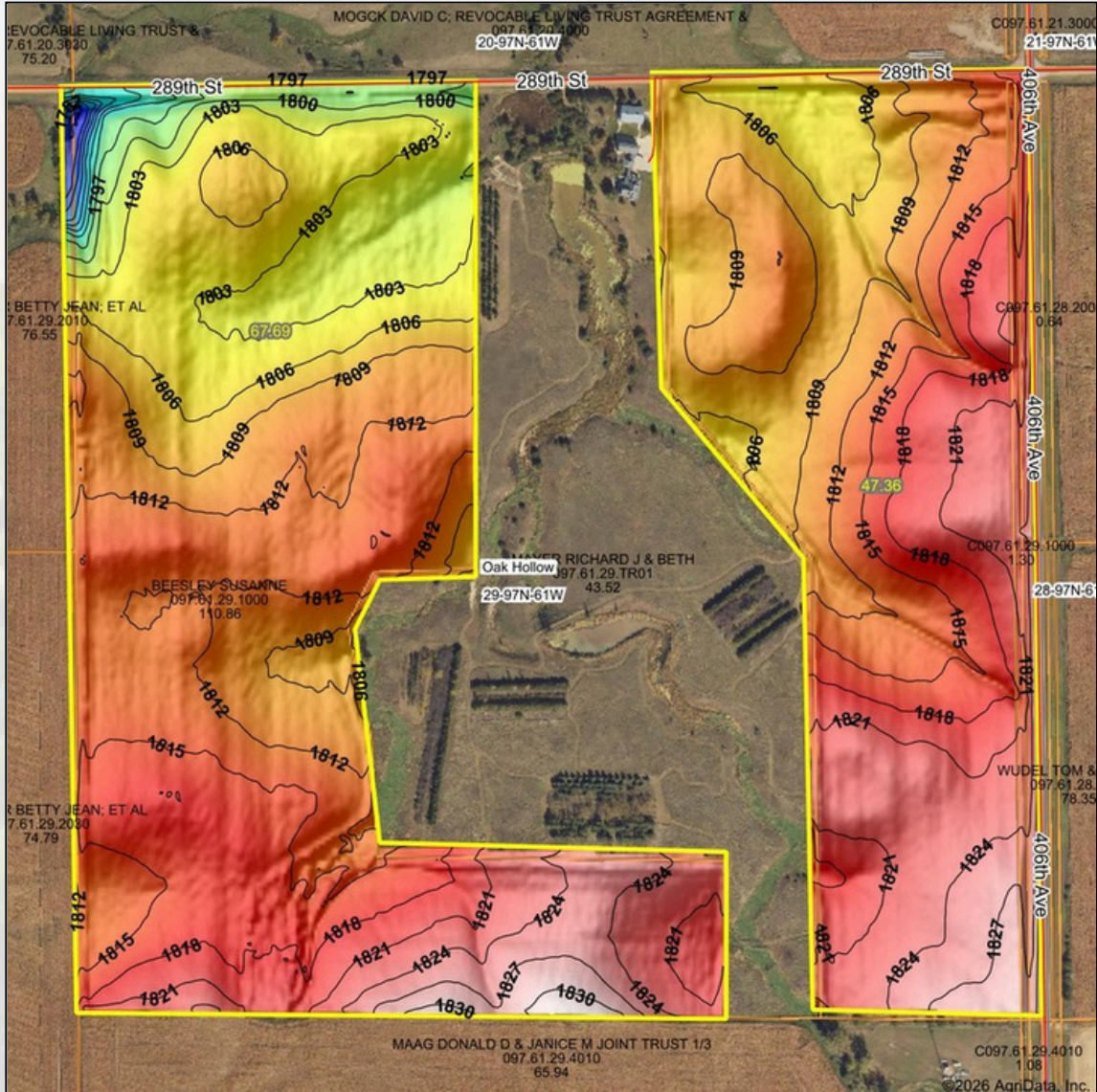
**29-97N-61W**  
Hutchinson County  
South Dakota



2/18/2026



## Topography Hillshade



Low Elevation High



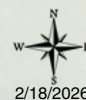
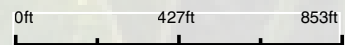
Maps Provided By:



© AgriData, Inc. 2025

www.AgrDataInc.com

Source:	USGS 3 meter dem
Interval(ft):	3
Min:	1,775.0
Max:	1,831.7
Range:	56.7
Average:	1,812.9
Standard Deviation:	7.61 ft



2/18/2026

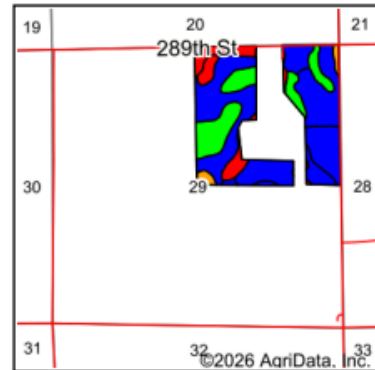
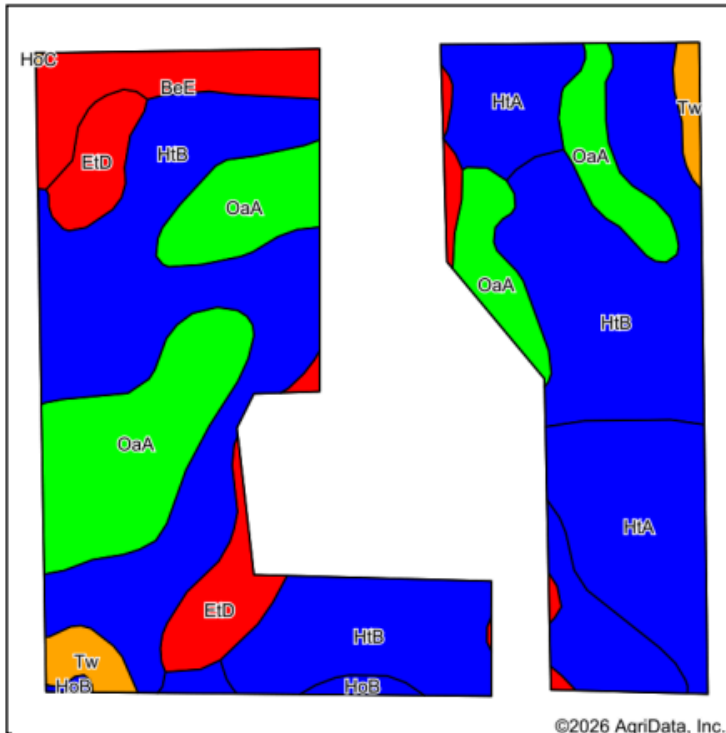
29-97N-61W  
Hutchinson County  
South Dakota

Boundary Center: 43° 11' 35.69, -98° 4' 29.76





### Soils Map



State: **South Dakota**  
 County: **Hutchinson**  
 Location: **29-97N-61W**  
 Township: **Oak Hollow**  
 Acres: **115.05**  
 Date: **2/18/2026**



Soils data provided by USDA and NRCS.

©2026 AgriData, Inc.

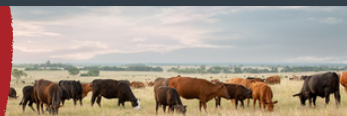
Area Symbol: SD602, Soil Area Version: 27

Code	Soil Description	Acres	Percent of field	PI Legend	Non-Irr Class *c	Productivity Index
HtB	Homme-Onita silty clay loams, 1 to 6 percent slopes	58.08	50.5%		Ile	89
OaA	Mobridge silt loam, 0 to 2 percent slopes	22.85	19.9%		Ilc	94
HtA	Homme-Onita silty clay loams, 0 to 2 percent slopes	16.56	14.4%		Ilc	90
EtD	Ethan-Betts loams, 9 to 15 percent slopes	7.53	6.5%		Vle	46
BeE	Betts-Ethan loams, 15 to 40 percent slopes	6.02	5.2%		Vlle	18
Tw	Tetonka and Whitewood silty clay loams	2.59	2.3%		IVw	73
HoB	Homme-Ethan-Onita complex, 1 to 6 percent slopes	1.42	1.2%		Ile	82
<b>Weighted Average</b>					<b>2.57</b>	<b>83.2</b>

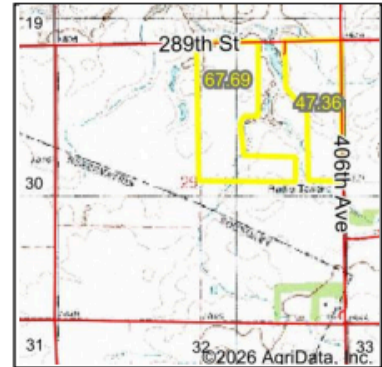
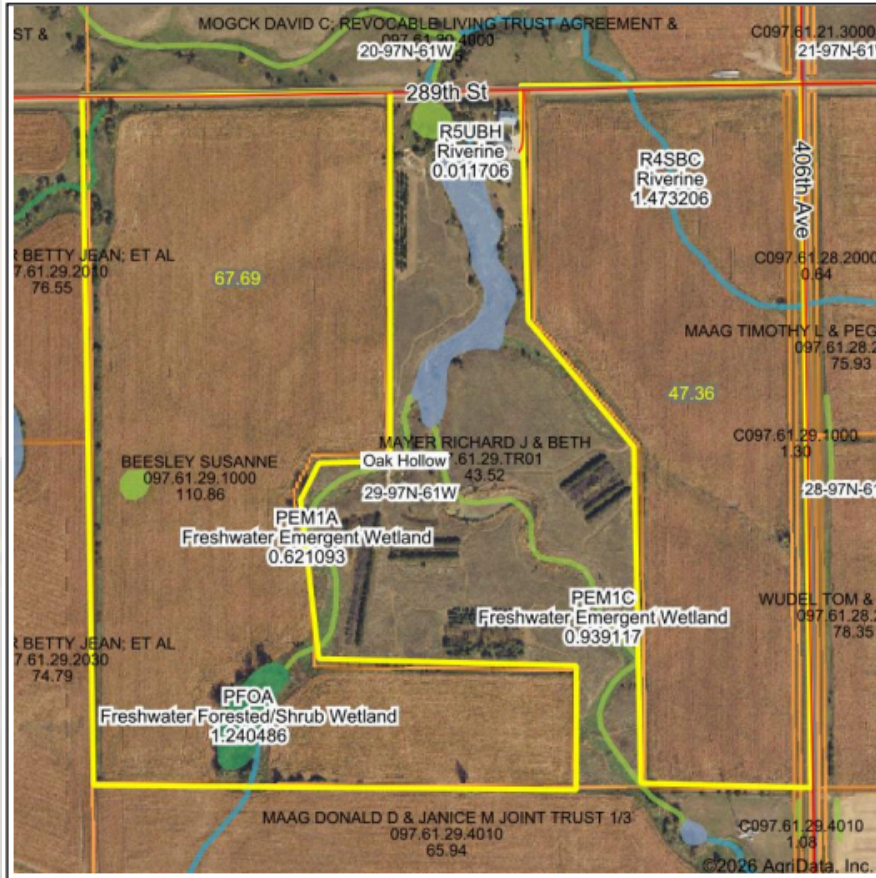
\*c: Using Capabilities Class Dominant Condition Aggregation Method



**FARM • RANCH • RECREATION  
 HUNTING • DEVELOPMENT**



## Wetlands Map



State: South Dakota  
 Location: 29-97N-61W  
 County: Hutchinson  
 Township: Oak Hollow  
 Date: 2/18/2026

AMERICAN LEGACY LAND CO

Maps Provided By



© AgrData, Inc. 2025



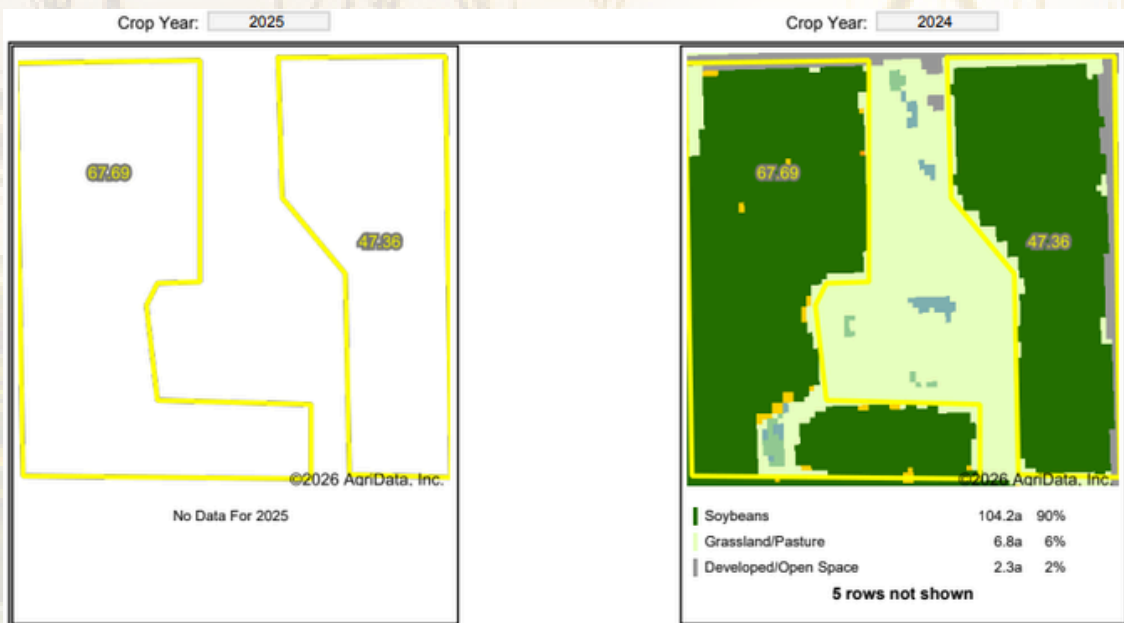
0ft 664ft 1329ft

Classification Code	Type	Acres
PFOA	Freshwater Forested/Shrub Wetland	1.39
R4SBC	Riverine	0.60
PEM1Ad	Freshwater Emergent Wetland	0.23
PEM1A	Freshwater Emergent Wetland	0.07
PEM1C	Freshwater Emergent Wetland	0.00
Total Acres		2.29

Data Source: National Wetlands Inventory website. U.S. DoI, Fish and Wildlife Service, Washington, D.C. <http://www.fws.gov/wetlands/>



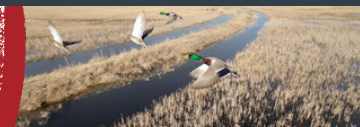
# 4 Year Crop History



Boundary Center: 43° 11' 35.69, -98° 4' 29.76  
 State: SD County: Hutchinson  
 Legal: 29-97N-61W Twnshp: Oak Hollow  
Crop data provided by USDA National Agricultural Statistics Service Cropland Data Layer



COMMITTED • DETERMINED  
TRUSTED



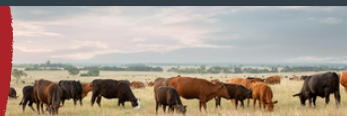
# AMERICAN LEGACY LAND CO





**AMERICAN**  
**LEGACY**  
LAND CO

**HELPING YOU BUY**  
**AND SELL LAND**



# AMERICAN LEGACY LAND CO



AMERICAN  
LEGACY  
LAND CO

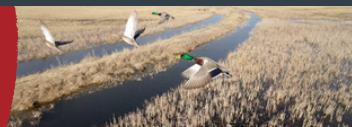
BUYING • SELLING  
AUCTIONS





**AMERICAN**  
**LEGACY**  
LAND CO

FARM • RANCH • RECREATION  
HUNTING • DEVELOPMENT



## About the Agent:

Geoff Kleinschmit was born in Yankton, South Dakota, and grew up in Northeast Nebraska. After attending high school in Crofton, Nebraska, he earned a Business Administration degree from Concordia University. He was then employed as a market specialist and location manager for Dakota Plains Ag Center, a progressive grain shuttle loader that provides grain-related business solutions to producers in the farming community.

When he is not working, Geoff can be found at the lake with his large family and close friends. His greatest passion is spot and stalk bow hunting, but Geoff loves the preparation before the hunt as much as the hunt itself. He enjoys shed hunting, running trail cameras, and taking inventory of what is on the ground, identifying ideal stand locations, and planting spring and fall food plots on the areas that he hunts.

Geoff is a supporter of Pheasant's Forever, Rocky Mountain Elk Foundation, and the Mule Deer Foundation. He lives in Yankton with his wife Lexi, boys Maverick and Miles, and their two dogs, Yeti and Wes.



If you are looking to buy or sell, Geoff is here to help. He strives to build long-lasting relationships with his clients as he guides them through the entire process, from listing to closing - and beyond.

**GEOFF KLEINSCHMIT**, LAND AGENT



605-760-3449



[Geoff@AmericanLegacyLandCo.com](mailto:Geoff@AmericanLegacyLandCo.com)