

Overview

Kimball, NE • Township: Bushnell • Location: 09-13N-58W

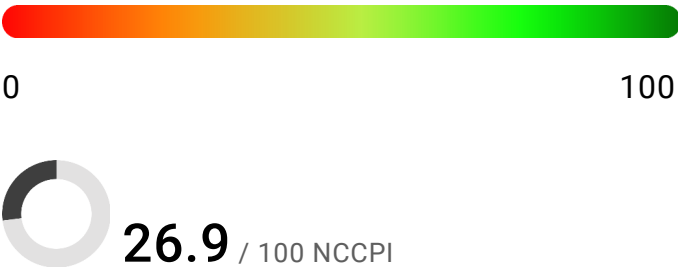
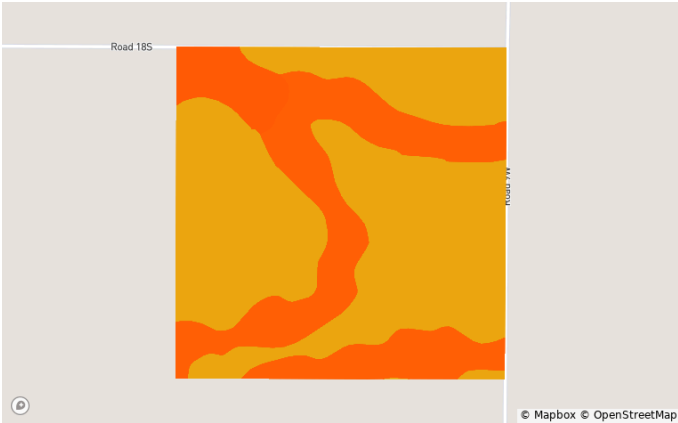
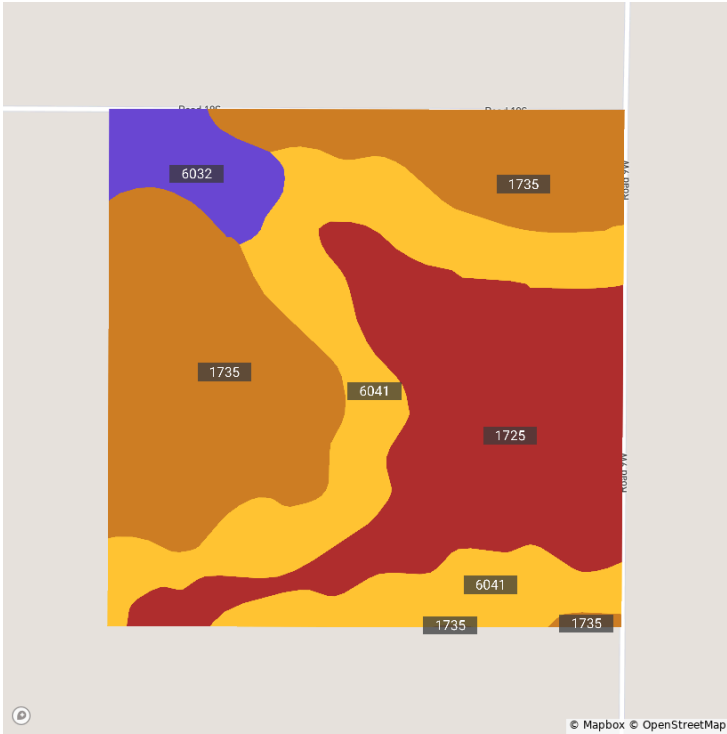
155.10 acres, 1 selection



Soils

Kimball, NE • Township: Bushnell • Location: 09-13N-58W

155.10 acres, 1 selection

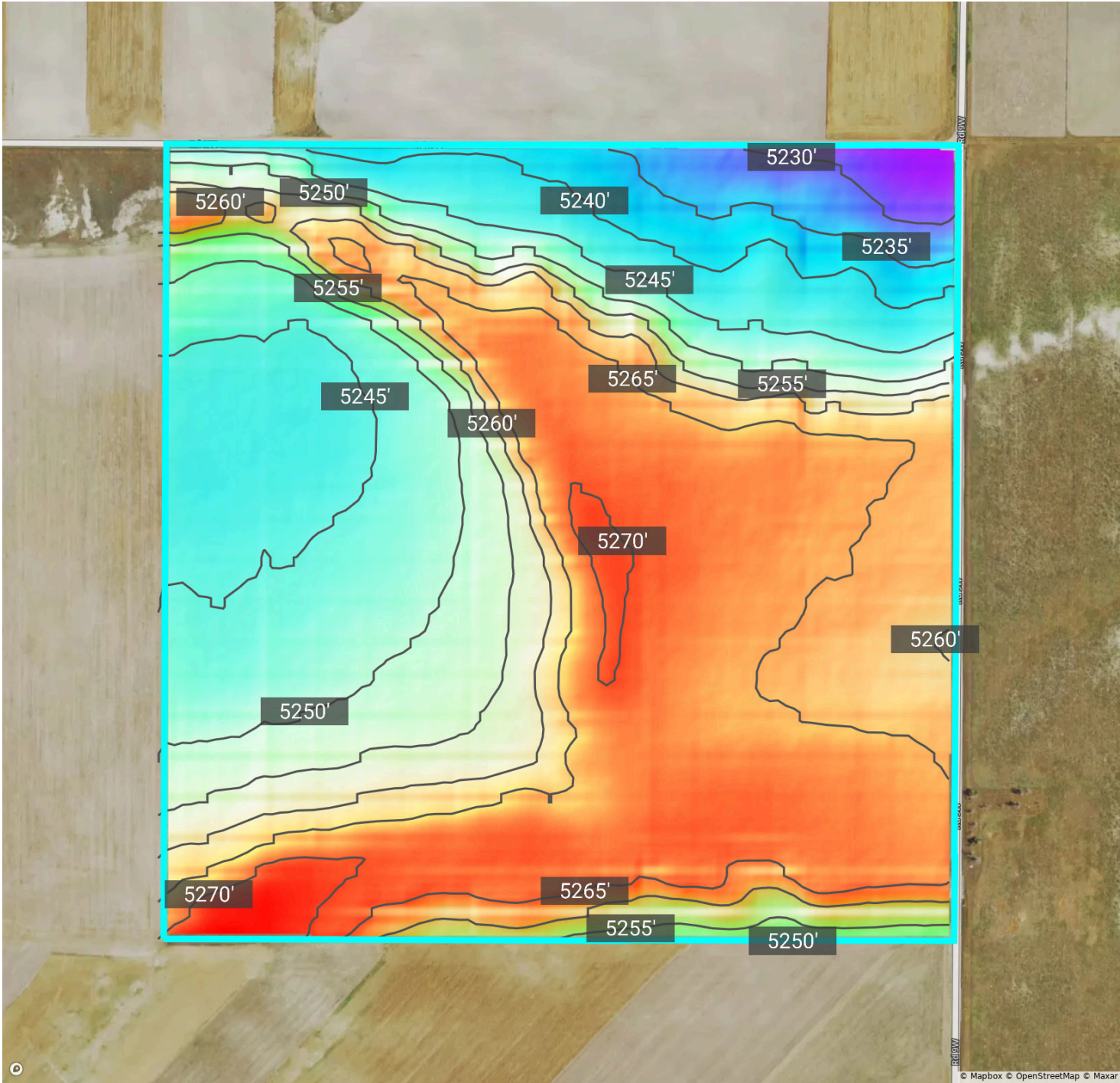


Code	Soil Description	Acres	% of Field	Non-IRR Class	IRR Class	NCCPI
1735	Rosebud-Blanche complex , 1 to 3 percent slopes	55.2	35.6%	4e	4e	32.4
1725	Rosebud loam, 0 to 1 percent slopes	47.1	30.4%	2c	2s	32.3
6041	Tassel-Blanche sandy loams, 3 to 9 percent slopes	44.2	28.5%	6s	4e	16.6
6032	Tassel-Blanche complex, 9 to 30 percent slopes	8.6	5.6%	6e	—	15.6

Elevation

Kimball, NE • Township: Bushnell • Location: 09-13N-58W

155.10 acres, 1 selection



5225.8 ft

5273.9 ft

Source: USGS 3 Meter Dem

Interval: 5.0 ft

Range: 48.0 ft

Min: 5225.8

Max: 5273.9