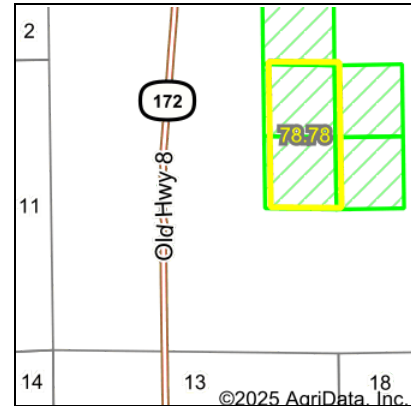
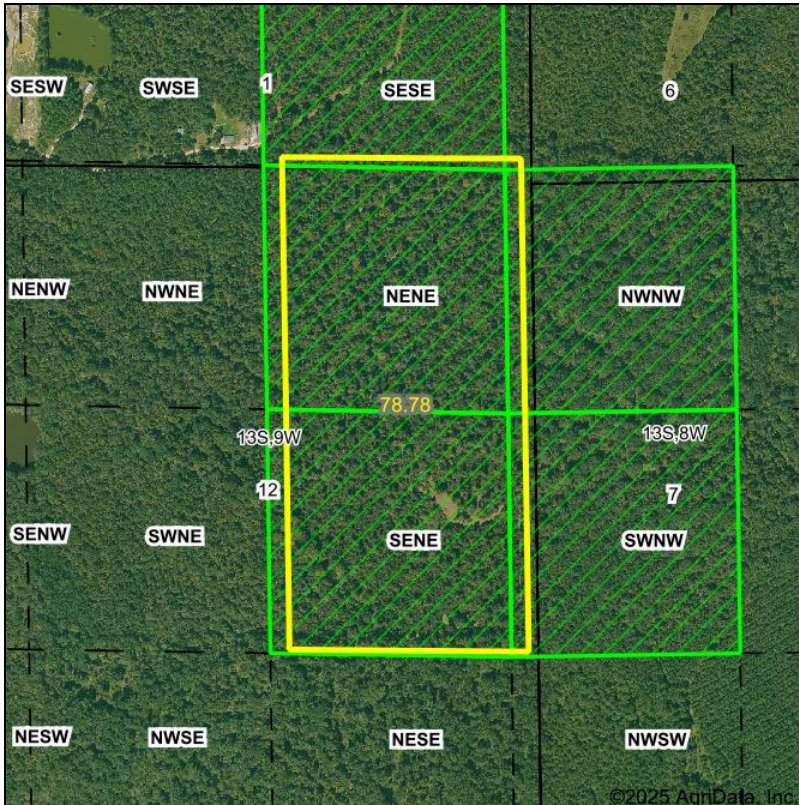


PLSS Legal Description



Acres: **78.83**
 Date: **6/6/2025**
 Township: **Pennington**
 County: **Bradley**
 State: **Arkansas**

Maps Provided By:



Map Center: 33° 35' 51.65, -91° 58' 45.15

0ft 809ft 1617ft

PLSS Source: **Various State Sources**

PLSS Note: **No Government Lots. Quarters created by equally splitting the sections**

Short Legal:

PT NWNW; PT SWNW 7-13S-8W AND PT SESE 1-13S-9W AND E2NE 12-13S-9W

Long Legal:

PART OF THE NW1/4 NW1/4; PART OF THE SW1/4 NW1/4 OF SECTION 7, TOWNSHIP 13 SOUTH, 8 WEST, DREW COUNTY, ARKANSAS AND PART OF THE SE1/4 SE1/4 OF SECTION 1, TOWNSHIP 13 SOUTH, 9 WEST, BRADLEY COUNTY, ARKANSAS AND E1/2 NE1/4 OF SECTION 12, TOWNSHIP 13 SOUTH, 9 WEST, BRADLEY COUNTY, ARKANSAS