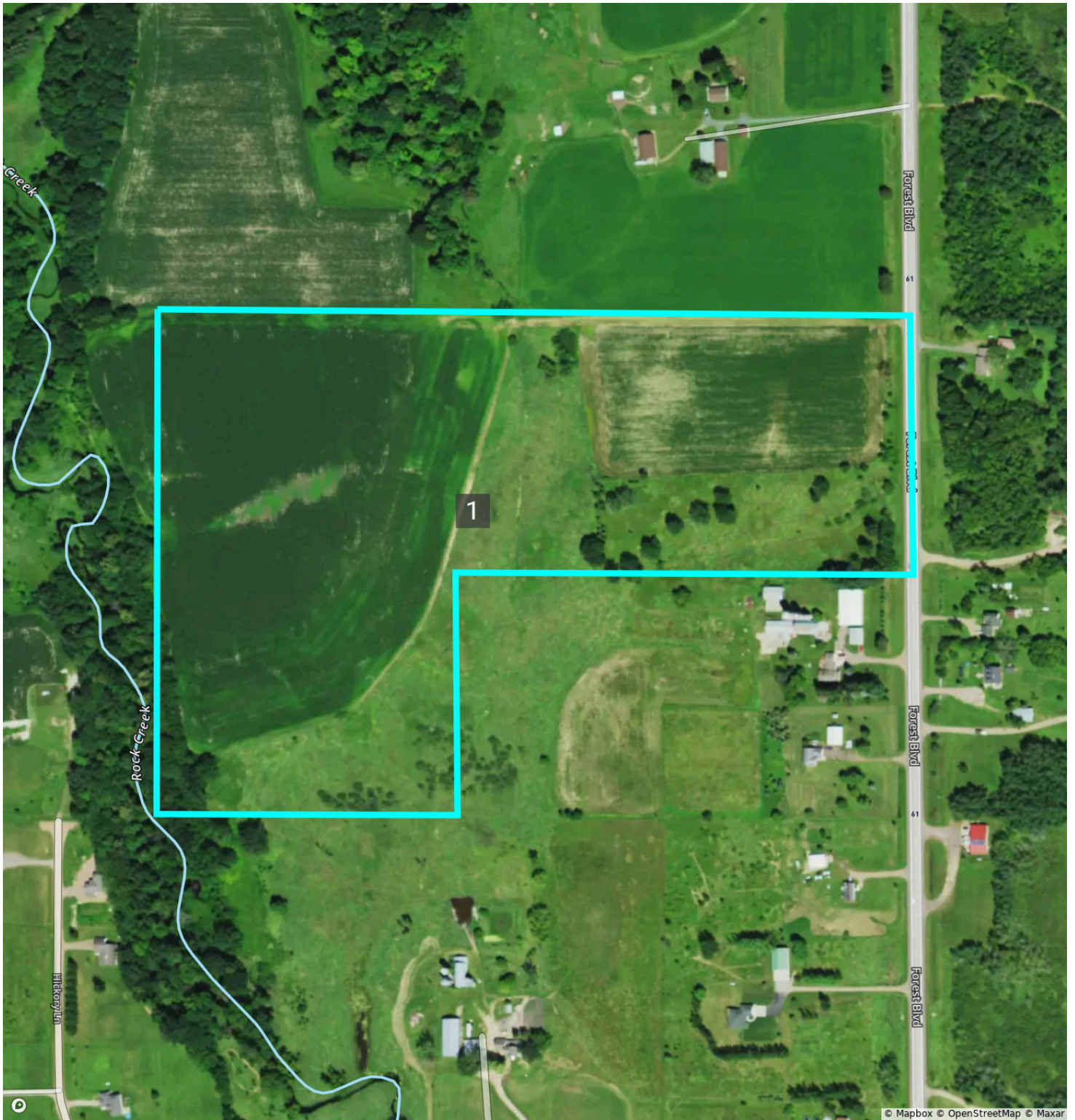


Overview

Pine, MN • Township: Rock Creek • Location: 16-38N-21W

41.69 acres, 1 selection

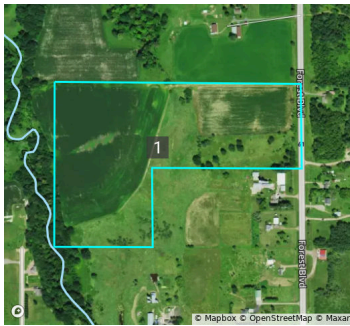


Overview 41.69 acres, 1 selection



Pine, MN • Township: Rock Creek • Location: 16-38N-21W

Type: Parcel



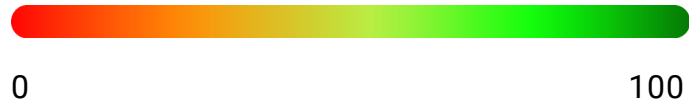
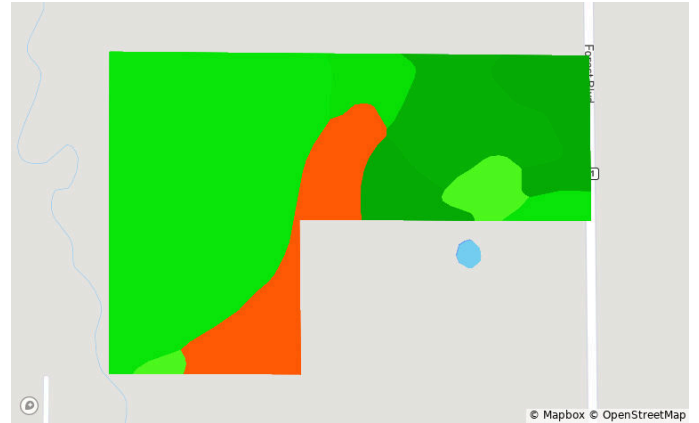
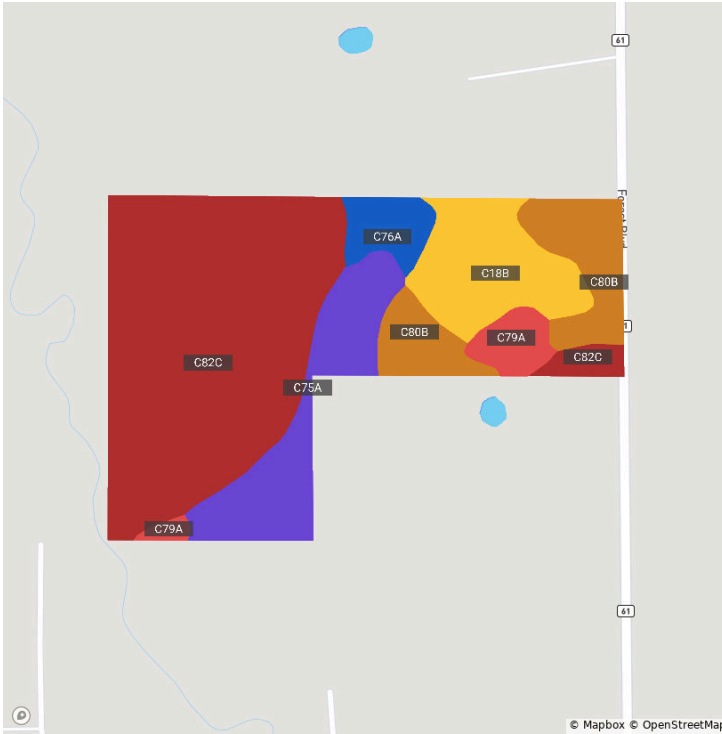
Acres
41.69

Parcel ID Number
430276002

Soils

Pine, MN • Township: Rock Creek • Location: 16-38N-21W

41.69 acres, 1 selection



Code	Soil Description	Acres	% of Field	Non-IRR Class	IRR Class	CPI
● C82C	Cushing, moderately eroded-Branstad loams, 2 to 15 percent slopes	21.9	51.8%	3e	—	82.0
● C75A	Seelyeville, occasionally ponded-Cathro, frequently ponded, complex, 0 to 1 percent slopes	6.0	14.1%	7w	—	15.0
● C18B	Branstad loam, 2 to 6 percent slopes	5.6	13.3%	2e	—	91.0
● C80B	Alstad-Branstad loams, 0 to 4 percent slopes	5.3	12.5%	2c	—	92.0
● C76A	Alstad-Talmoon loams, 0 to 2 percent slopes	1.8	4.2%	3w	—	83.0
● C79A	Talmoon-Alstad-Bluffton, frequently ponded, loams, 0 to 2 percent slopes	1.7	4.1%	6w	—	69.0

Crop History

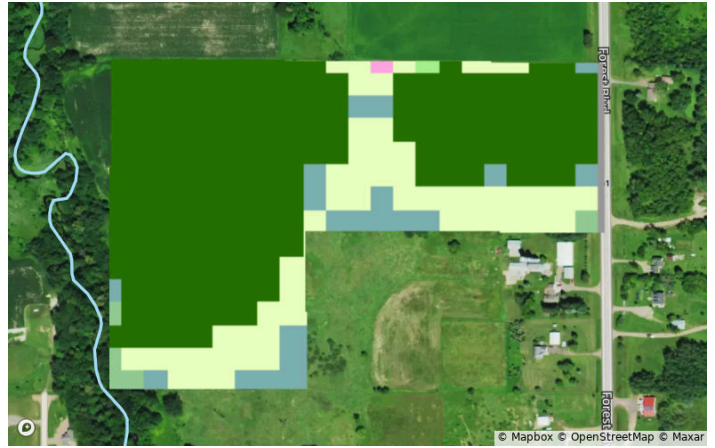
Pine, MN • Township: Rock Creek • Location: 16-38N-21W

41.69 acres, 1 selection

2023



2022



2021



2020



2019



2018



Crop History



Pine, MN • Township: Rock Creek • Location: 16-38N-21W

41.69 acres, 1 selection

All Selections

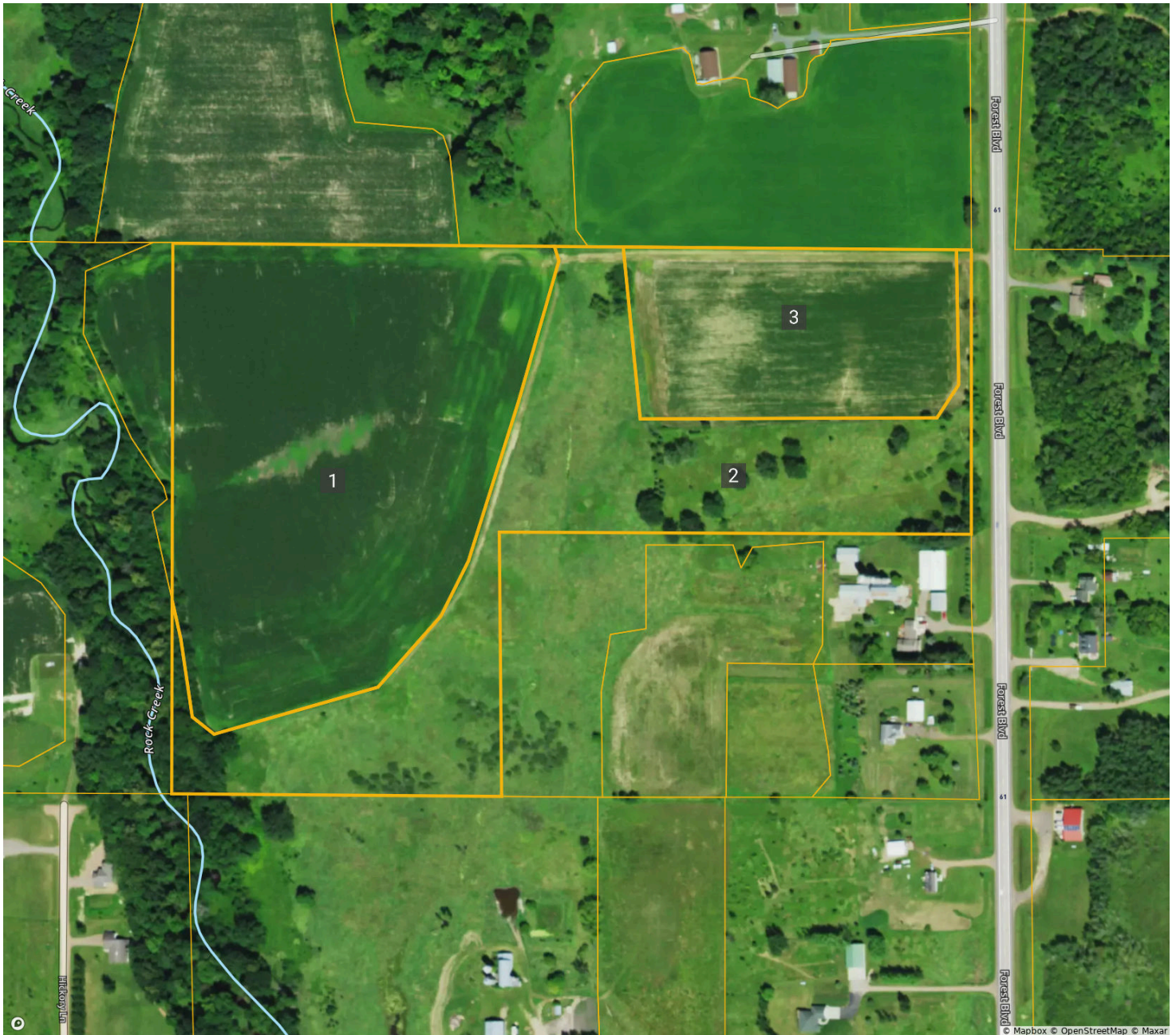


Crop	2023	2022	2021	2020	2019	2018
Soybeans	56.4%	62.1%	2.6%	61.0%	16.9%	57.9%
Grassland/Pasture	31.8%	21.5%	25.1%	17.4%	17.4%	14.9%
Corn	2.1%	0.0%	60.5%	1.0%	44.6%	4.6%
Herbaceous Wetlands	3.6%	9.2%	5.6%	10.3%	10.8%	9.2%
Other	2.6%	3.6%	2.6%	6.7%	6.7%	8.7%
Developed/Open Space	3.6%	3.6%	3.6%	3.6%	3.6%	4.6%

FSA Overview

Pine, MN • Township: Rock Creek • Location: 16-38N-21W

41.69 acres, 1 selection



CLU		Acres
1		18.97
2		14.97
3		7.19