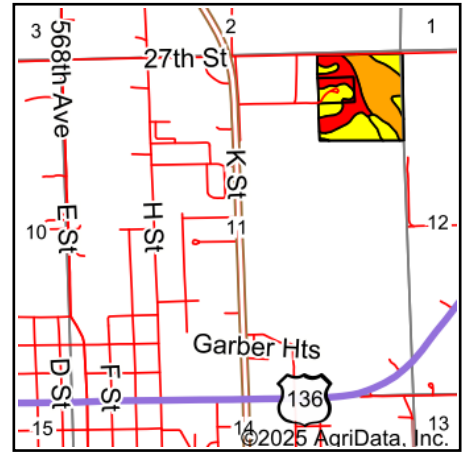
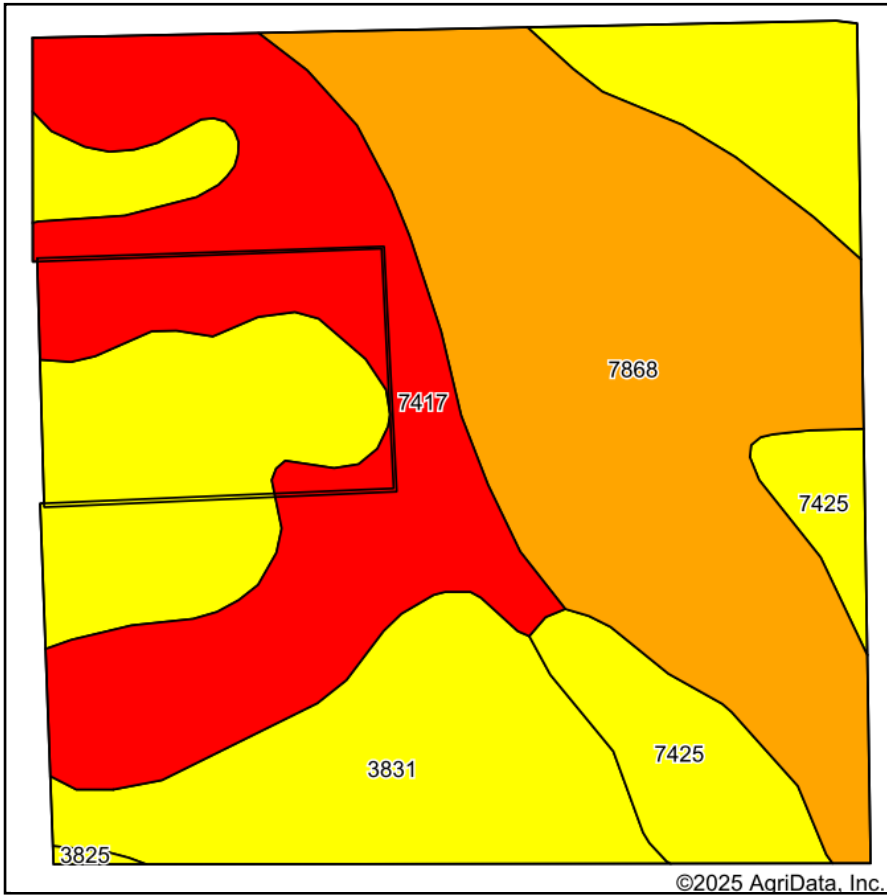


Soils Map



State: **Nebraska**
 County: **Jefferson**
 Location: **11-2N-2E**
 Township: **Fairbury**
 Acres: **40**
 Date: **1/30/2025**



Maps Provided By:



© AgriData, Inc. 2023

www.AgriDataInc.com



Soils data provided by USDA and NRCS.

Area Symbol: NE095, Soil Area Version: 22

Code	Soil Description	Acres	Percent of field	SRPG Legend	Non-Irr Class *c	Irr Class *c	Range Production (lbs/acre/yr)	SRPG	Alfalfa hay Tons	Alfalfa hay Irrigated Tons	Bromegrass alfalfa AUM	Bromegrass alfalfa Irrigated AUM	Corn Bu	Corn Irrigated Bu	Grain sorghum Bu
7868	Nodaway silt loam, channeled, occasionally flooded	13.69	34.1%		VIw		4038	74	1	1	1	2	13	18	13
3831	Crete silty clay loam, 3 to 7 percent slopes, eroded	13.11	32.8%		IIIe	IIIe	3460	61							
7417	Morrill clay loam, 11 to 30 percent slopes	10.28	25.7%		VIe		3400	30							
7425	Morrill clay loam, 3 to 6 percent slopes, eroded	2.86	7.2%		IIIe	IVe	3400	67							
3825	Crete silt loam, 1 to 3 percent slopes	0.06	0.2%		Ile	Ile	3375	65							
Weighted Average					4.80	*-	3638	57.9	0.3	0.3	0.3	0.7	4.4	6.2	4.4

*n: The aggregation method is "Weighted Average using all components"

*c: Using Capabilities Class Dominant Condition Aggregation Method

*- Irr Class weighted average cannot be calculated on the current soils data due to missing data.

Soils data provided by USDA and NRCS.