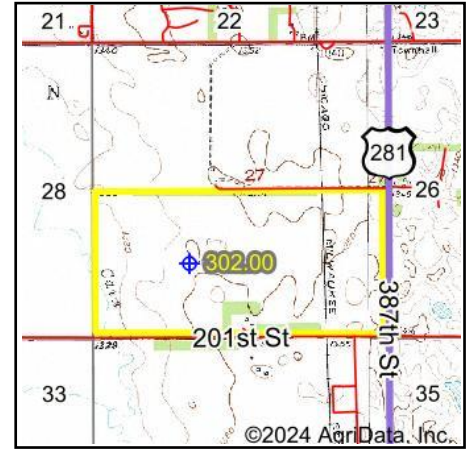
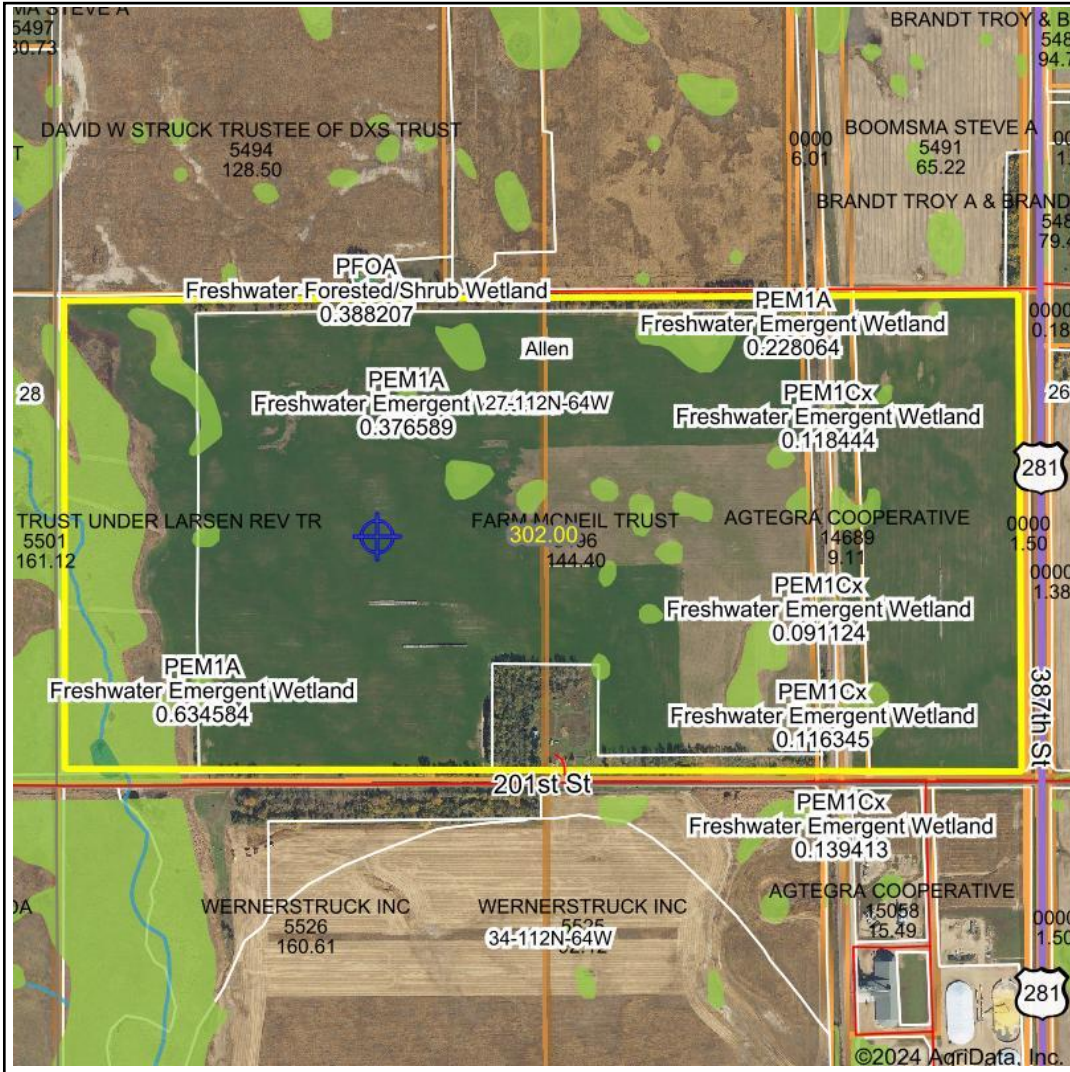


# Wetlands Map



State: **South Dakota**  
 Location: **27-112N-64W**  
 County: **Beadle**  
 Township: **Allen**  
 Date: **12/31/2024**



Maps Provided By:



0ft 1189ft 2379ft

Classification Code	Type	Acres
PEM1C	Freshwater Emergent Wetland	18.92
PEM1A	Freshwater Emergent Wetland	10.93
PEM1Ad	Freshwater Emergent Wetland	7.07
R4SBC	Riverine	0.61
PEM1Cx	Freshwater Emergent Wetland	0.51
PFOA	Freshwater Forested/Shrub Wetland	0.46
Total Acres		38.50

Data Source: National Wetlands Inventory website. U.S. DoI, Fish and Wildlife Service, Washington, D.C. <http://www.fws.gov/wetlands/>