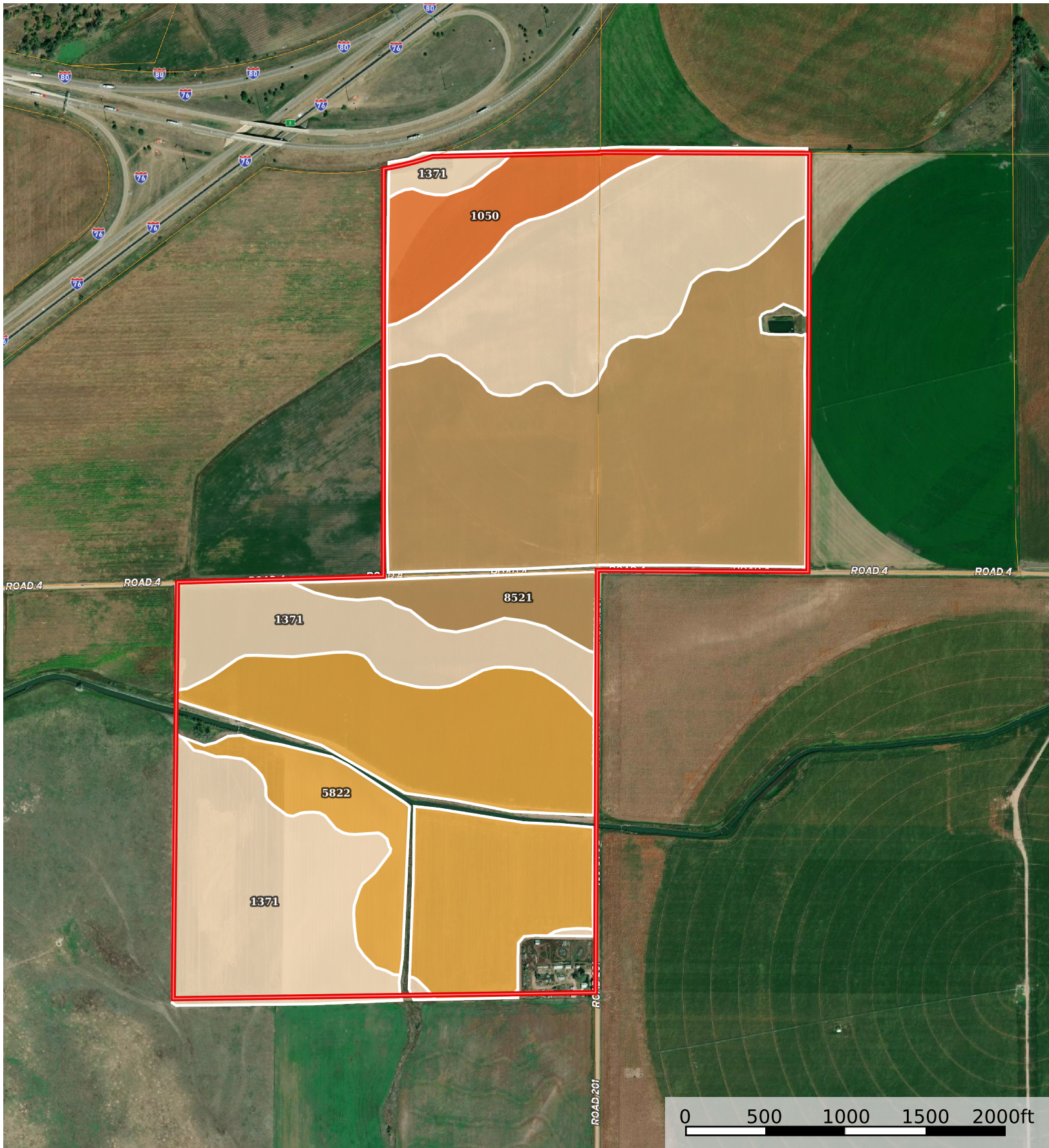


# Deuel County Robison Pivots

Nebraska, AC +/-



Boundary

SOIL CODE	SOIL DESCRIPTION	ACRES	%	CPI	NCCPI	CAP
1371	Chappell-Alice-Broadwater complex, 0 to 3 percent slopes	115.67	37.92	0	31	3e
8521	Merrick sandy clay loam, very rarely flooded	97.23	31.88	0	59	2c
5822	Duroc loam, terrace, 0 to 1 percent slopes	74.77	24.51	0	51	2c
1050	Lexsworth loam, very rarely flooded	17.34	5.69	0	32	3w
TOTALS		305.01(*)	100%	-	44.89	2.44

(\*) Total acres may differ in the second decimal compared to the sum of each acreage soil. This is due to a round error because we only show the acres of each soil with two decimal.

