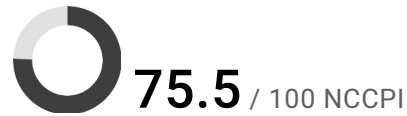
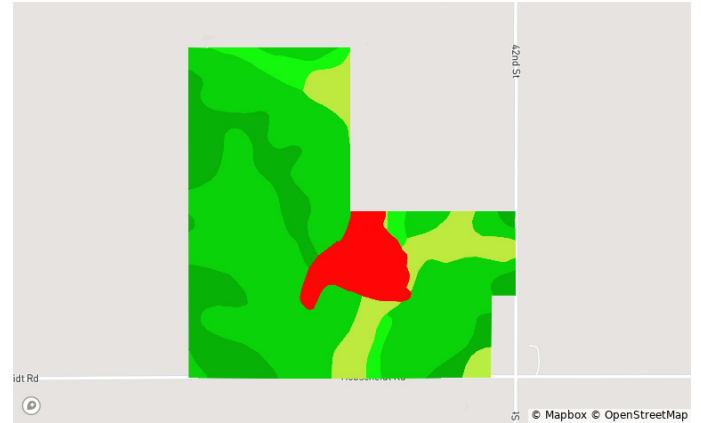
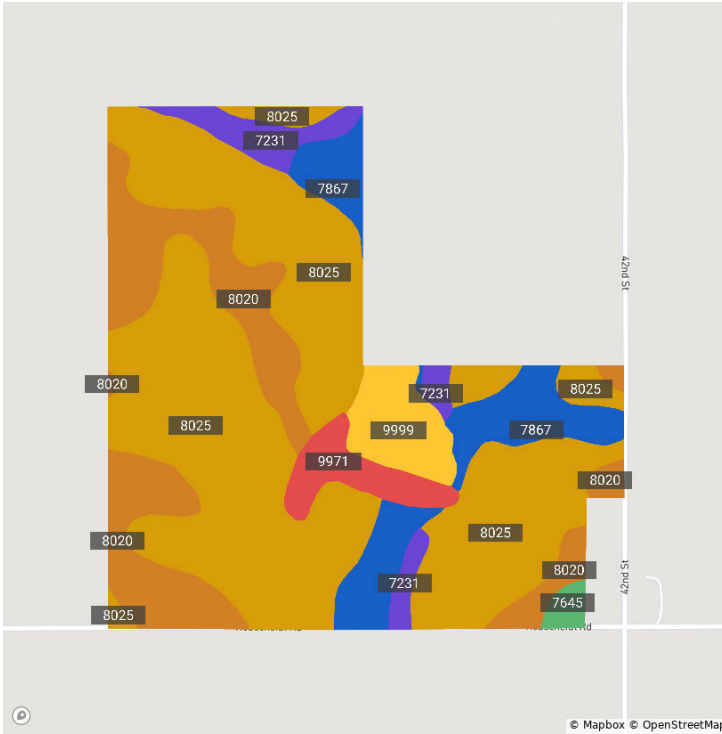


Soils

Cass, NE • Township: West Rock Bluff • Location: 29-11N-13E

117.00 acres, 1 selection



Code	Soil Description	Acres	% of Field	Non-IRR Class	IRR Class	NCCPI
8025	Marshall silty clay loam, 6 to 11 percent slopes, eroded	68.7	58.5%	3e	4e	85.5
8020	Marshall silty clay loam, 2 to 6 percent slopes, eroded	21.1	18.0%	2e	3e	91.3
7867	Nodaway silt loam, channeled, frequently flooded	12.2	10.4%	6w	—	51.7
9999	Water	5.4	4.6%	—	—	0.0
7231	Judson silt loam, 2 to 6 percent slopes	5.0	4.2%	2e	—	78.0
9971	Arents, earthen dam	4.2	3.6%	—	—	0.0
7645	Yutan silty clay loam, 11 to 17 percent slopes, eroded	0.9	0.8%	4e	4e	53.3