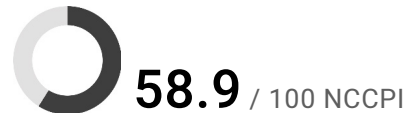
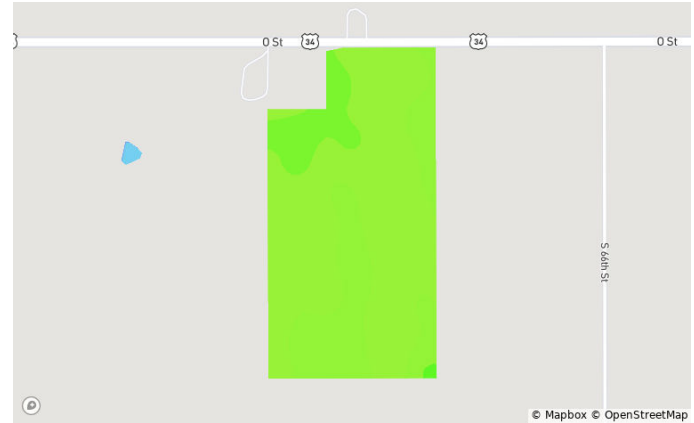


# Soils

Cass, NE • Township: Avoca • Location: 25-10N-12E

73.00 acres, 1 selection



Code	Soil Description	Acres	% of Field	Non-IRR Class	IRR Class	NCCPI
7644	Yutan silty clay loam, 6 to 11 percent slopes, eroded	49.0	66.7%	3e	4e	58.3
7641	Yutan silty clay loam, 2 to 6 percent slopes, eroded	17.5	23.8%	2e	3e	59.1
7773	Colo-Nodaway complex, frequently flooded	6.8	9.2%	3w	—	62.8
7206	Aksarben silty clay loam, 2 to 6 percent slopes	0.2	0.3%	2e	3e	66.4