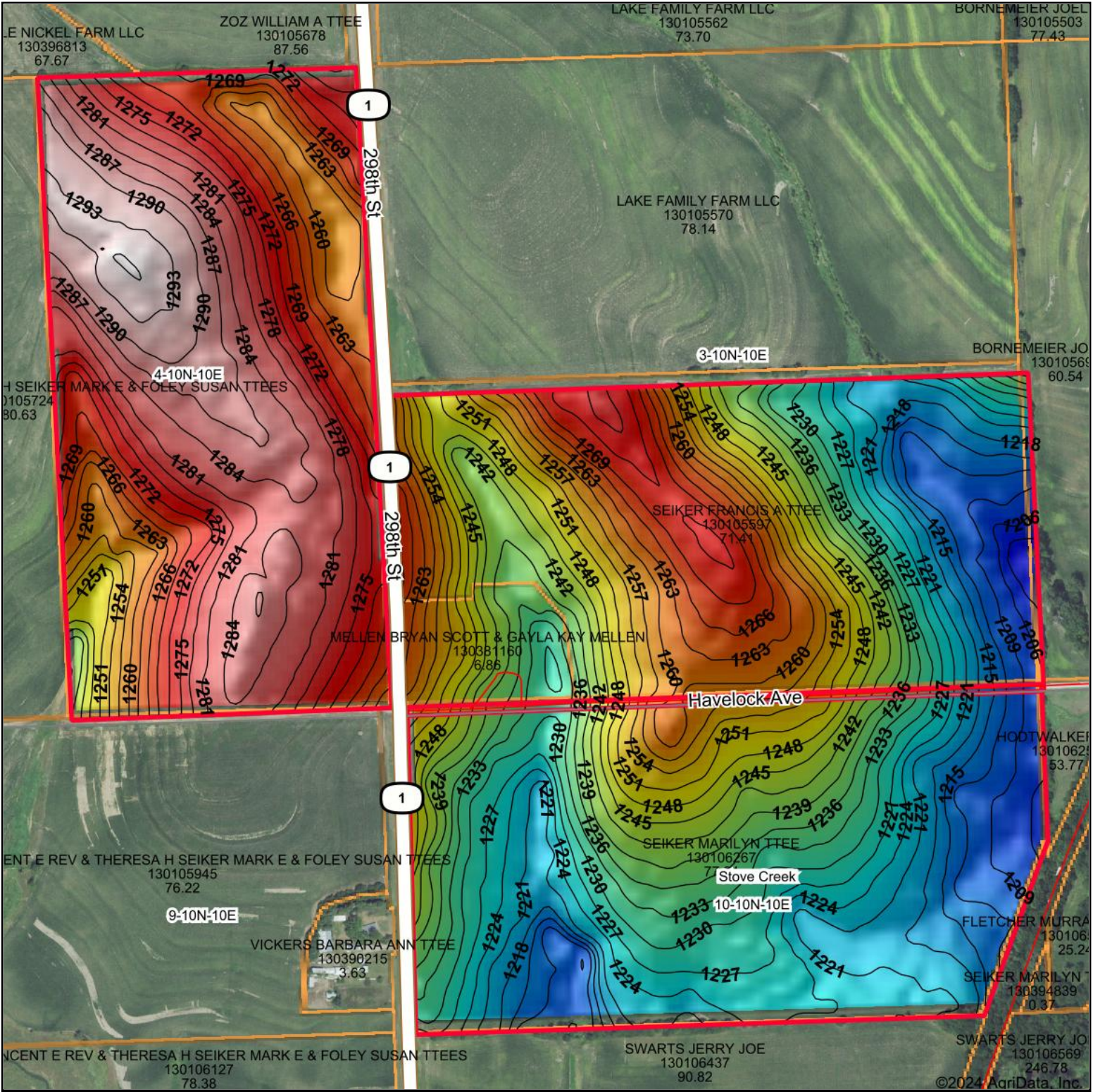


# Topography Hillshade



Low	Elevation	High	Source: USGS 10 meter dem	0ft	635ft	1270ft
			Interval(ft): 3			
			Min: 1,200.9	<p>3-10N-10E Cass County Nebraska</p> <p>9/17/2024</p> <p>Boundary Center: 40° 51' 28.6, -96° 17' 29.08</p>		
			Max: 1,296.7			
			Range: 95.8			
			Average: 1,249.7			
			Standard Deviation: 24.84 ft			

AMERICAN LEGACY LAND CO

Maps Provided By:



© AgriData, Inc. 2023 www.AgriDataInc.com