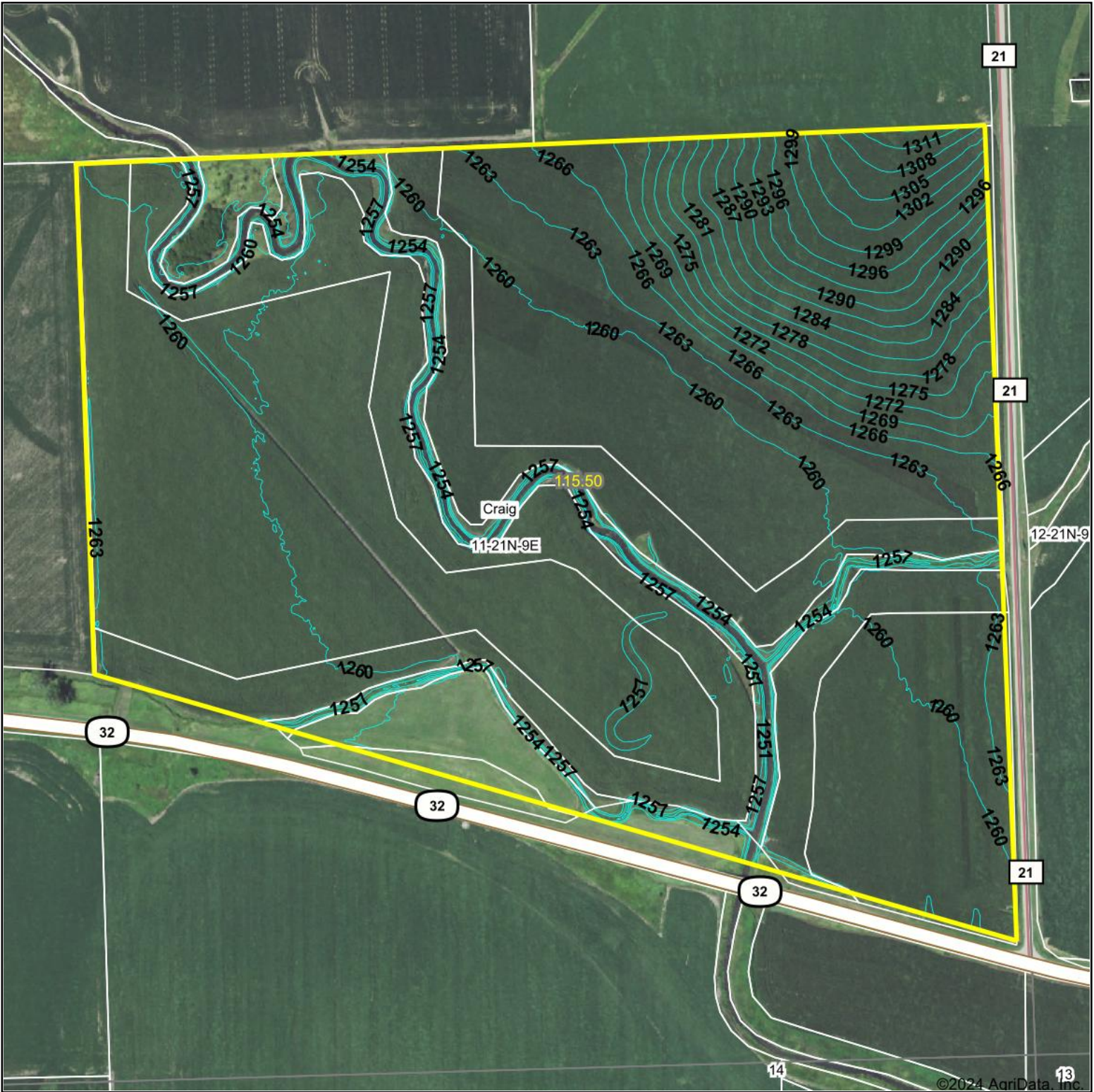


Topography Contours



Source: USGS 1 meter dem

0ft 449ft 898ft

Interval(ft): 3.0

Min: 1,249.1

Max: 1,314.8

Range: 65.7

Average: 1,263.7

Standard Deviation: 11.02 ft



9/8/2024

11-21N-9E
Burt County
Nebraska

Boundary Center: 41° 48' 14.47, -96° 22' 17.91



Maps Provided By:



© AgriData, Inc. 2023 www.AgriDataInc.com

Field borders provided by Farm Service Agency as of 5/21/2008.